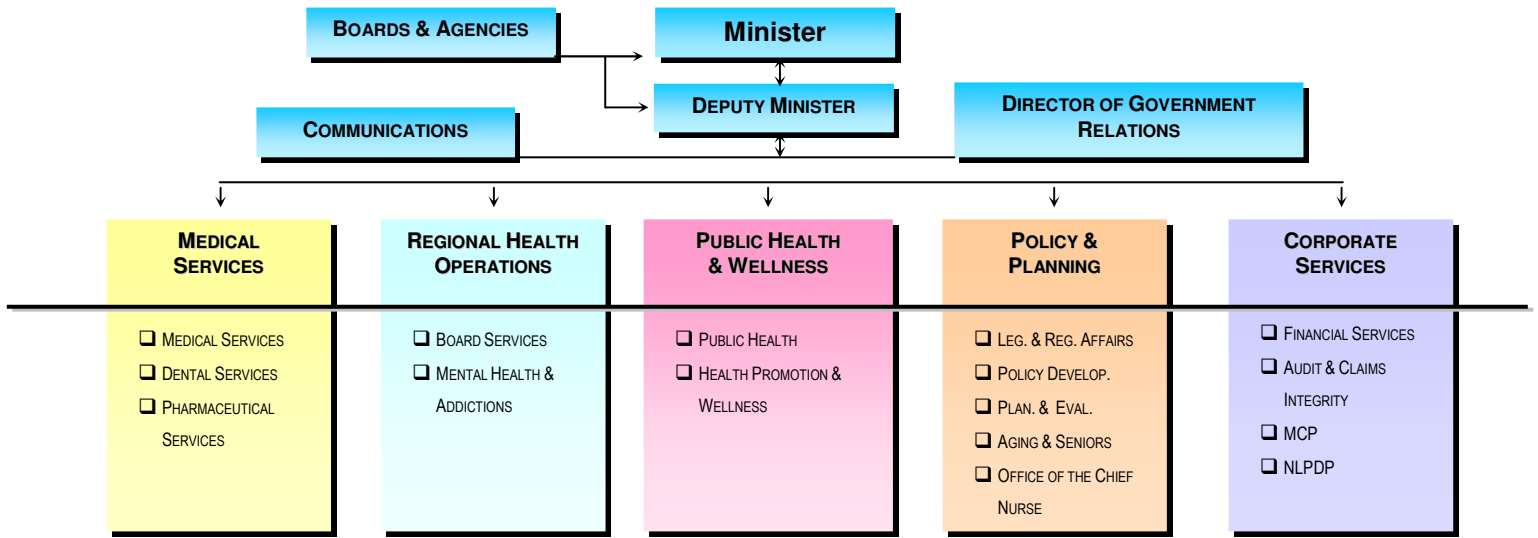


DEPARTMENT OF HEALTH & COMMUNITY SERVICES ORGANIZATIONAL STRUCTURE



MINISTER'S OFFICE

Minister	Jerome Kennedy	3124
Administrative Assistant	Colleen Power	3124
Executive Assistant to Minister	Jack Harrington	5980
Departmental Liaison	Sharon Vokey	2074
Political Assistant	Tracy Shute	0425

Administrative Assistant	Jackie MacNab	4718
Parliamentary Secretary to the Minister	Keith Hutchings	1390
Political Assistant	Darlene Dunne	1390

DEPUTY MINISTER'S OFFICE

Deputy Minister (A)	Don Keats	3125
Administrative Assistant	Pam Bennett	3125
Program Coordinator	Rhonda Fleming	6162

Communications

Director	Tansy Mundon	1377
Communications Manager	Bradley Power	2888
Marketing Consultant	Gillian Hussey	6986
Administrative Assistant	Michael Pickett	2667

Government Relations

Director	Rosemary Boyd	1775
Senior Intergovernmental Relations Officer	Kathy Rodway	3533
Government Relations Analyst	Vanessa Reddick	1416
Government Relations Analyst	Suellen Sheppard	0117
Program Coordinator	Carol Crumney	3110
Administrative Assistant	Donna Bursley	1713

MEDICAL SERVICES BRANCH

Medical Consultant	Dr. Cathi Bradbury	3157
Secretary	Beverley Power	3157
Director Physician Services	Dr. Larry Alteen	3508
Secretary	Mabel Martin	3508
Asst. Director Physician Services	Dr. Blair Fleming	758-1501
Secretary	Marie Heath	758-1557
Statistician/Analyst	Colleen Owens	3698
Program Planning Officer (A)	John-Paul Gordon	4029

Director Dental Services	Dr. Ed Williams	758-1503
---------------------------------	-----------------	----------

Pharmaceutical Services

Director	Colleen Stockley	6507
Manager, Policy & Professional Services	Patricia Clark	6507
Manager, Client Services & Operations	William Hutchings	6507
Project Manager	Keith Sheppard	6507
Program Coordinator	Marguerite Mullins	6507
Clinical Pharmacist II, Supervisor	Colleen Ryan	6507
Clinical Pharmacist I	Kelly Kavanagh	6507
Clinical Pharmacist I	Brenda Wild	6507
Clinical Pharmacist I	Carol Hipditch	6507
Clinical Pharmacist I	Cindy Cornell	6507
Clinical Pharmacist I	Amanda Hunt	6507
Pharmaceutical Claims Assessor III	Jean Tremblett	6507
Pharmaceutical Claims Assessor II	Pauline Kavanagh	6507
Pharmaceutical Claims Assessor II	Diane Pippy	6507
Pharmaceutical Claims Assessor II	Michelle Noseworthy	6507
Pharmaceutical Claims Assessor II	Carrie Bishop	6507
Clerk Typist III	Lisa Codner	6507
Clerk Typist III	Amanda Roberts	6507
Data Entry Operator	Lisa Ennis	6507
Data Entry Operator	Diane Cantwell	6507
Data Entry Operator	Tina Power	6507
Pharmaceutical Claims Assessor I	Sherri Lee Andrews	6507
Pharmaceutical Claims Assessor I	Suzanne Haghighi	6507
Clerk I	Michael Coughlan	6507

REGIONAL HEALTH OPERATIONS BRANCH

Assistant Deputy Minister	Tony Wakeham	3127
Administrative Assistant	Mary Crotty	5265

Board Services

Director (A)	Beverly Griffiths	0717
Secretary	Connie Fry	3105
Regional Consultant	Allan Corbett	2436
Regional Consultant	Derek Penney	7681
Regional Consultant	Karen Nolan	1531
Provincial Wait Times Coordinator	Janice Sanger	777-5336
Board Services Analyst	Janet Reid	3428
Engineering Consultant	Natalie Hallett	2079
Primary Health Care Consultant	Lesley Ann Rogers	4453
Aboriginal Health Consultant	Tracy Tizzard-Drover	4349
Secretary	Debbie Humphries	3120
Secretary	Ann Marie Furey	2379

Provincial Blood Coordinating Program

Senior Manager, National blood Portfolio	John Rumboldt	5296
Program Manager	Marilyn Collins	5246
Utilization Specialist	Linda Orr	6573

Provincial Kidney Program Coordinator

	Cheryl Harding	2788
--	----------------	------

Mental Health & Addictions

Director	Debbie Sue Martin	3658
Addictions Consultant	Renée Ryan	1335
Mental Health Consultant	Sharon Barnes	7740
Secretary	Barbara Jackman	3658

PUBLIC HEALTH & HEALTH PROMOTION & WELLNESS BRANCH

Public Health		
Chief Medical Officer of Health	Dr. Faith Stratton	3430
Program Support	Juanita Follett	3430
Clerk Typist III	Jo-Ann Duke	0724
Senior Consultant	Gerri Thompson	4197
Director Health Emergency Management		
	Dennis Davis	3912
Health Emergency Analyst	AJ Willis	7205
Director Environmental Public Health		
	Darryl Johnson	3422
Environmental Public Health Consultant		
	Douglas Howse	1607
	Catherine O'Keefe	5019
Director Disease Control	Marion Yetman	3427
Infection Control Nurse Specialist		
Communicable Disease Control Nurse Specialist	Gillian Butler	0115
Pandemic Planning Coordinator (A)	Jason Letto	0697
Director Public Health Information		
	Vacant	5306
Provincial Epidemiologist	Kelly Butt	3209
Vaccines & Supplies Coordinator	Neil Butland	777-6391
Director Public Health Laboratories	Dr. Sam Ratnam	777-7235

Health Promotion & Wellness

Director	Eleanor Swanson	5023
Secretary	Patricia Bradley	6243
Health Promotion Consultant	Carol Ann Cotter	3939
Health Promotion Consultant	Darlene Ricketts	0719
Health Promotion Consultant	Diane Kieley	7443
Health Promotion Consultant	Bernie Squires	1374
Nutrition Consultant	Glendora Boland	6013
Nutrition Consultant	Janine Woodrow	2101
Consultant, Parent & Child Health	Cathie Royle	3280

CHILD, YOUTH & FAMILY SERVICES

MINISTER'S OFFICE

Minister	Joan Burke	0173
Administrative Assistant	Bernadette Noseworthy	0173
Executive Assistant to Minister	Scott Locke	0160
Constituency Assistant	Janine Carter	643-8663
Director Communications	Susanne Hiller	5148

DEPUTY MINISTER'S OFFICE

Deputy Minister	Sheree MacDonald	0958
Administrative Assistant	Beverly Stanley	0958

Senior Director of Policy

Senior Manager, Policy	Wanda Lundrigan	3473
	Barbara Cull	643-6854
	Fax 643-6855	
	NLHC Building	
	2 nd Floor, Room 203	
	58 Oregon Drive	
	Stephenville, NL A2N 2Y1	

Director Strategic Human Resource Management

	Wanda Penney	0398
--	--------------	------

Senior Human Resource Specialist

	Vacant	0618
--	--------	------

Director Information Management

Inquiries Coordinator	Mike Bannister	1898
	Veronica Dominic-Boucher	3721

Director Financial Services

Administrator Officer, Budget & Monitoring	Paul Grandy	0276
	Jack Antle	2694

POLICY & PLANNING BRANCH

Assistant Deputy Minister	Joy Maddigan	3103
Administrative Assistant	Elaine Power	3103
Aboriginal Health Consultant	Allyson Jackson	1410

Legislative & Regulatory Affairs

Director	Reginald Coates	3421
Secretary	Mary Cooper	3745
Consultant, Legislative Management Analyst	Karen Stone	1603
Privacy Manager	Rose Butler	7776
Legislative Analyst	Brian Bennett	7007
	Megan Collins	2472

Records Center

Clerk IV	Earl Patey	3156
Clerk III	Joanne Hogan	4849
Clerk III	Derek Collins	5316
Clerk IV	Vacant	7969

Building 1242-Pleasantville

Clerk III	Sheila Lewis	0780
Clerk III	Robyn Peddle	0780
Clerk III	Erica Skiffington	0780
Clerk III	Bonnie Williams	0780

Policy Development

Director	Wanda Legge	5249
Secretary	Rose Phillips	3657
Health Policy Analyst	Danny Barrett	6372
Health Policy Analyst	Angie Batstone	3756
Resource Centre Librarian	Heather Roberts	2264

Planning & Evaluation

Director	Vacant	7075
Secretary	Cindy Tucker	3940
Policy & Planning Evaluation Consultant		
	Vacant	1128
Policy & Planning Research Analyst	Elaine Hancock	4012
Strategic Planning Consultant	Doris Hancock	6535

Long Term Care and Community Support Services

Project Manager	Debbie Morris	7686
Policy Consultant	Sandra Dingle	2018
Financial Manager	Pam Barnes	5323

Aging & Seniors

Director	Suzanne Brake	4957
Secretary	Sharon Day	4856
Aging & Seniors Consultant	Hélène Davis	4906
Aging & Seniors Analyst	Keith Dyer	5303
Aging & Seniors Consultant	Farah McCrate	1346
Office of Aging & Seniors	Toll free	1-888-494-2266

Health Workforce Planning

Director Workforce Planning	Heather Hanrahan	2501
Manager of Workforce Planning	Andrew Wells	1890
Workforce Planning Analyst	Eric Wainwright	2710

Office of the Chief Nurse

Director and Chief Nurse	Anita Ludlow	2039
---------------------------------	--------------	------

CHILDREN & YOUTH SERVICES BRANCH

Assistant Deputy Minister	Jennifer Jeans	0016
Administrative Assistant	Deanne Hunt	0016

Director

Secretary	Ivy Burt	6721
Manager, CYFS	Krystle Collins	2668
Consultant, Intervention Services	Michelle Shallow	6078
Consultant, Alternate Dispute Resolution	Helen McDonald	7184

Consultant, Youth Services/MAC	Colleen Smith	5815
Consultant, Family Services	Joanne Cotter	7598
Manager, Adoptions and Child In-Care	Christine Osmond	3527

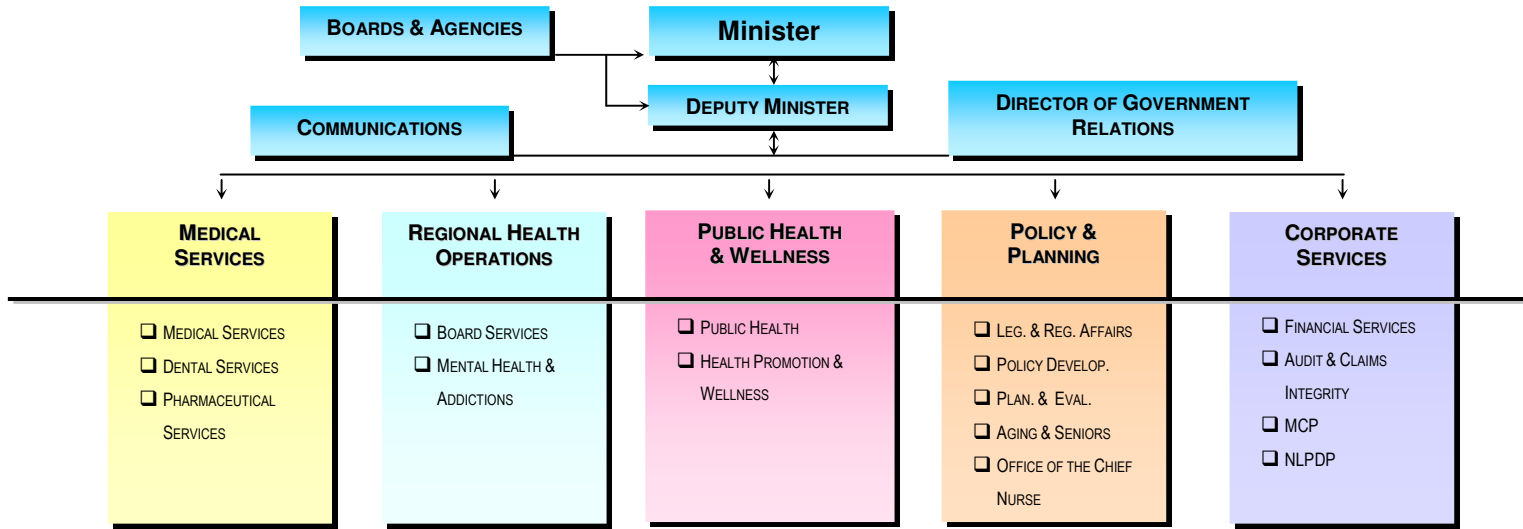
	Vacant	
Consultant, Adoptions	Ethel Dempsey	5134
Clerk IV, Adoptions	Pauline Cook	5359

Consultant, In Care & Residential Services		
	Mabel Anderson	7185
Consultant, Children In-Care	Joanmary Baker	4922
Manager, Quality Initiatives	Wilma MacInnis	7529
Secretary	Joseph Hann-Snow	2343
Consultant, Quality Improvement	Lynette West	3133
Consultant, CRMS	Debbie Loder	7944
Departmental Program Coordinator	Elaine Tucker	4173
Clerk IV, Quality Initiatives	Tina Coombs	7238
Consultant, Training & Development	Roberta Moores	7213
Consultant, Training & Development	Stephanie Mealey	3213
Manager, Youth Corrections	Paul Ludlow	2794
Secretary	Justine Hann	2094
Consultant, Extrajudicial Sanctions	Robin Janes	5164
Consultant	Herb Maddick	2646
Secretary	Danielle Learning	0752

Family and Child Development

Director (A)	Rosalind Smyth	0281
Project Manager, NCB/ECD	Vacant	
Secretary	Eileen Snow	2959
Consultant, Intervention Services	Paula Hennessey	3550
Consultant, Intervention Services	Crystal Hickey	3193
Consultant, Family Resource Centres		
	Deborah Randell	5554
Manager, Child Care Services	Helen Sinclair	4055
Consultant, Child Care Services	Christine McLean	2093
Consultant, Child Care Services	Dolores Dooley	3959
Consultant, Child Care Services, Inclusion		
	Laurel Penney	1463
Consultant, Child Care Services	Nicole Clancey	1027
Clerk IV	Kelly Lee	5960

DEPARTMENT OF HEALTH & COMMUNITY SERVICES ORGANIZATIONAL STRUCTURE



CORPORATE SERVICES BRANCH

Assistant Deputy Minister Administrative Assistant	Denise Tubrett 0620 Fanny Hoddinott..... 0620
Director Corporate Initiatives	Harry Hutchings 0444
Financial Services Director Secretary	Wendy O'Keefe..... 5287 Regina Jennings 6870
Accounting Services Manager Accountant I Accountant I Clerk III Accounting Clerk II Accounting Clerk I	Linda Boland 2304 Don Myers..... 3107 Regina Hoskins..... 6086 Jeff Perry..... 6881 Loretta McLoughlin..... 2199 Pauline Crawford..... 2319
Budget & Monitoring Manager Budget Analyst Budget Analyst	Michelle Jewer 7956 Sharon Maher..... 5248 Elizabeth Burgess 3137
Financial Information Manager (A) Management Analyst Management Analyst (A) Accounting Clerk	Natasha Kennedy..... 3446 Dave Adey..... 5278 Colleen Stack..... 6492 Vacant..... 7460
Board Financial Services Budget Officer Budget Analyst Financial Officer	Donald Furlong..... 5297 Vacant..... 5236 Norma White 7739
Office Management Services Manager Secretary Clerk III Clerk III Front Desk Receptionist	Richard Hayes 4083 Sherry Evans 6795 Jacqueline Vickers 7694 Kristi Warren 1622 Karen White 5021
Information Management Manager Master Trainer Business Analyst	Kevin Durdle 1596 Patrick Durne 1032 Aaron Byer..... 0672
Audit & Claims Integrity Executive Director Secretary Policy Analyst	Tony Maher..... 758-1599 Paulette Gillis..... 758-1506 Brad Gibb..... 5390
Insured Services Manager Clerk IV Clerk IV Clerk IV Clerk IV Claims Processor	Marlene Wall 3108 Lori Oliver..... 5222 Valerie Humby 3996 Francina Sweetapple 0628 Wanda Dunphy 4928 Darlene George..... 4813
Medical Audit & Compliance Manager Clerk Typist III Accountant Clerk IV Medical Claims Auditor Medical Claims Auditor Audit Analyst	Barry Stanley 0515 Susanne Smith..... 758-1566 John Edwards..... 3054 Linda Dyer..... 5572 Patsy Scaplen..... 758-1544 Cavell Stanley 758-1562 Mike Tizzard..... 758-1553
Programs Audit Manager, Programs Senior Auditor Drug Program Auditor Drug Program Auditor	Randy Power 758-1605 Jennifer Bragg..... 758-1560 Krystal Ryan..... 758-1524 Andrea Myles..... 758-1549

MCP – Public Service & Administration Manager Clerk IV Clerk III Clerk III Word Processing Operator Custodian Data Entry Operator Data Entry Operator	Bonnie Steele..... 0140 Kerry Whitten 758-1550 Randy Whitten..... 758-1540 Elaine Barton..... 758-1528 Joan Woods..... 4206 Kevin Stamp..... 758-1569 Loretta Vinnicombe 1536 Kelly M. Collins..... 2059
NLPDP Registration-Stephenville Director Secretary Financial Assessor Financial Assessor Financial Assessor Financial Assessor Manager, Processing Processor Processor Processor Processor Processor Processor Clerk III Mail Messenger Clerk	Peter Kearley 643-5465 Debbie Simms..... 643-5421 John Mercer..... 643-5507 Kim Bennett..... 643-5508 Kim Sparkes..... 643-5512 Terri Keating..... 643-5679 Tammy Joy Swyers..... 643-5466 Peggy Hynes..... 643-5560 Carol O'Quinn 643-5525 Ada Shave 643-5493 Marcie Warford..... 643-5488 Gail Sheen 643-5667 Melissa Muise 643-6801 Dorothy Hurley 643-5551 Randy Young 643-5545 Bonnie Dinn 643-5641
MCP – Grand Falls - Windsor Regional Director Clerk IV Public Service and Administration Public Services Supervisor Clerk IV (Purchasing) Clerk III Clerk IV Clerk III Word Processing Operator Data Entry Operator Data Entry Operator Custodian	Glenn Budgell..... 292-4009 Denise Hemeon 292-4008 Garry Jewer 292-4010 Cathy Bennett 292-4005 Enos Bungay 292-4025 Roxanne Fudge..... 292-4012 Terry Wheeler 292-4024 Teresa Laité..... 292-4000 Vacant..... 292-4070 Brenda Pelley..... 292-4026 Freeman Piercey..... 292-4050
Claims Assessing Assessing Manager Medical Claims Assessor III Medical Claims Assessor III Medical Claims Assessor II Medical Claims Assessor II Medical Claims Assessor II Medical Claims Assessor II Medical Claims Assessor II Medical Claims Assessor II Medical Claims Assessor II Medical Claims Assessor I	Cherry Hicks..... 292-4004 Carolyn Braye 292-4044 Jayne Hunter 292-4040 Kathy Buckley 292-4041 Pauline Faulkner..... 292-4038 Bernie MacDonald..... 292-4039 Lynette McDonald..... 292-4042 Helen Noseworthy 292-4043 Madonna Smith 292-4028 Yvonne Yates 292-4047 Marie Walsh 292-4046
Medical Affairs & Training Manager Administrative Officer Clerk IV	Brenda Hancock..... 292-4003 Brenda Martin..... 292-4023 Margaret Foley..... 292-4049
Claims Processing Processing Manager Medical Claims Assessor II Medical Claims Assessor II Medical Claims Processor III Medical Claims Processor III Medical Claims Processor III Medical Claims Assessor I Medical Claims Assessor I Medical Claims Assessor I	Paulette Davis 292-4013 Phyllis Andrews..... 292-4033 Beverley Pelley 292-4034 Vacant..... 292-4029 Judy Melvin..... 292-4032 Vacant..... 292-4030 Harry Rideout..... 292-4036 Verena Skeard..... 292-4016 Vacant..... 292-4035

STRATEGIC HUMAN RESOURCES MANAGEMENT

Director (A) Senior Human Resource Manager Secretary Secretary Manager, Employee Relations Manager, Learning & Development Organizational Development Officer Organizational Development Officer Organizational Development Officer Manager of Human Resource Planning Manager of Integrated Disability Management	Susan Rumsey 5102 Leona O'Neill..... 6391 Susan Pynn 2457 Brenda James 5750 Glenn George..... 1338 Shaunna Reid..... 0683 Vacant..... 0689 Marcia Snow..... 7632 Claudette Yetman..... 4238 Carol-Anne Reid..... 0148 Hannah Greeley 7031 Cyril Miller..... 0341 Jennifer Dawson 0906 Richard Byrne 2025 Dean Shute 0194 Andrew Pike 5510 Vacant..... 0440 Pat Cadigan..... 2287 Vacant..... 5090
---	---

GENERAL INFORMATION

Reception Desk	5021
Main Fax Number (Records Centre)	5824
Conference Rooms	Heather 1170
Compass Group (in house catering)	5744
IT Help Desk	4357 (HELP)
Office of the Chief Information Officer	4000
Newfoundland & Labrador Centre For Health Information	752-6009
General Inquiries	4989
MCP	758-1500
NL Prescription Drug Program	753-3615
Seniors Citizens Drug Program	1-888-724-7760
	753-3615
	1-888-724-7760

Note: All Departmental telephone numbers begin with "729" unless otherwise stated.

Email: healthinfo@gov.nl.ca

November 20, 2009