

Week 10, March 3 – March 9, 2019

Department of Health and Community Services
Government of Newfoundland and Labrador



Respiratory Weekly

Highlights

- ⇒ In week 10, there were 52 laboratory-confirmed cases of influenza reported (Table 1).
- ⇒ As of March 9, 2019, there have been 464 (462A, 2B) laboratory-confirmed cases, 98 hospitalizations, 31 ICU admissions and nine deaths.
- ⇒ Across Canada, influenza activity continues to decline slowly, but eastern regions are reporting higher levels of activity compared to western regions. Influenza A (H1N1)pdm09 is the most common influenza virus circulating in Canada.
- ⇒ Cases have been reported in all regional health authorities, with approximately 40% of cases reported in Labrador-Grenfell Health (Figure 2).
- ⇒ One-quarter of cases reported to date were less than 20 years of age (Figure 3).
- ⇒ Eleven confirmed influenza outbreaks have been reported so far this season (Figure 4).
- ⇒ Emergency room visits with influenza-like illness (ILI) have increased from last week (Figure 5).
- ⇒ Other respiratory viruses circulating in week 10 include RSV, PIV, adenovirus, adenovirus, entero/rhinovirus and hMPV (Table 3).
- ⇒ Symptomatic respiratory HealthLine calls have decreased from last week (Figure 6).

Laboratory-Confirmed Cases

Table 1: Number of positive influenza cases in NL, by severity, week 10, 2018-2019 season

	Cases	Hospitalizations	ICU Admissions	Deaths
Week	52	9	1	0
Total	464	98	31	9

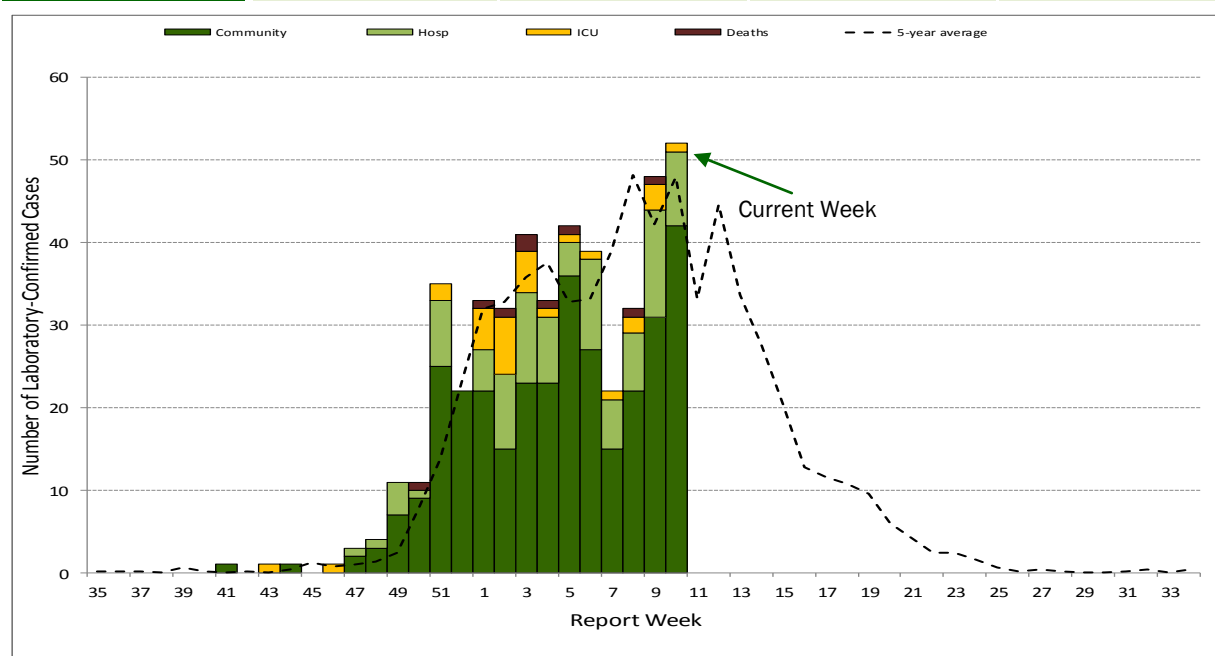


Figure 1: Number of cases, hospitalizations, ICU admissions and deaths, by week virus identified, 2018-2019

Influenza by type, RHA

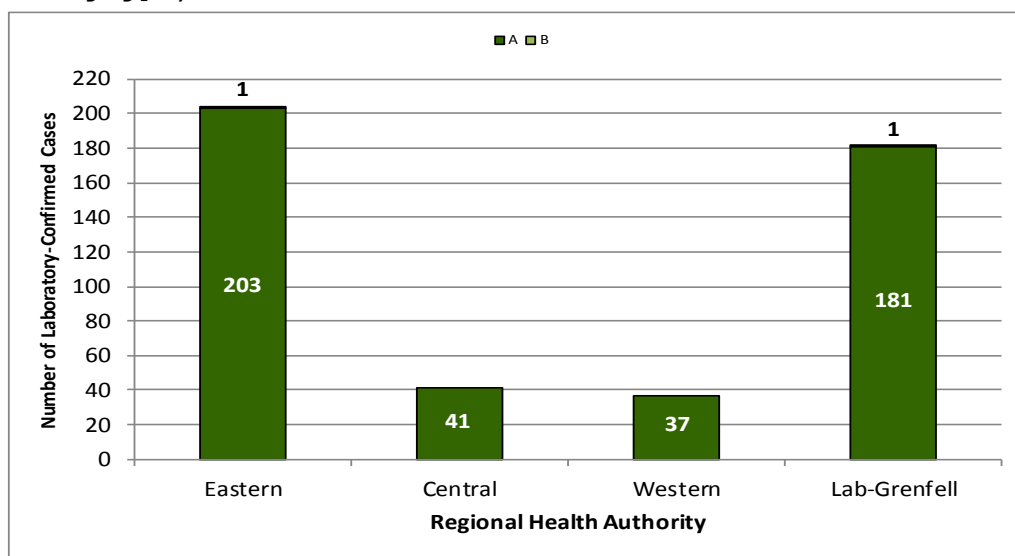


Figure 2: Total number of laboratory-confirmed influenza A and B, by Regional Health Authority, 2018-2019

Influenza by age group (n=464)

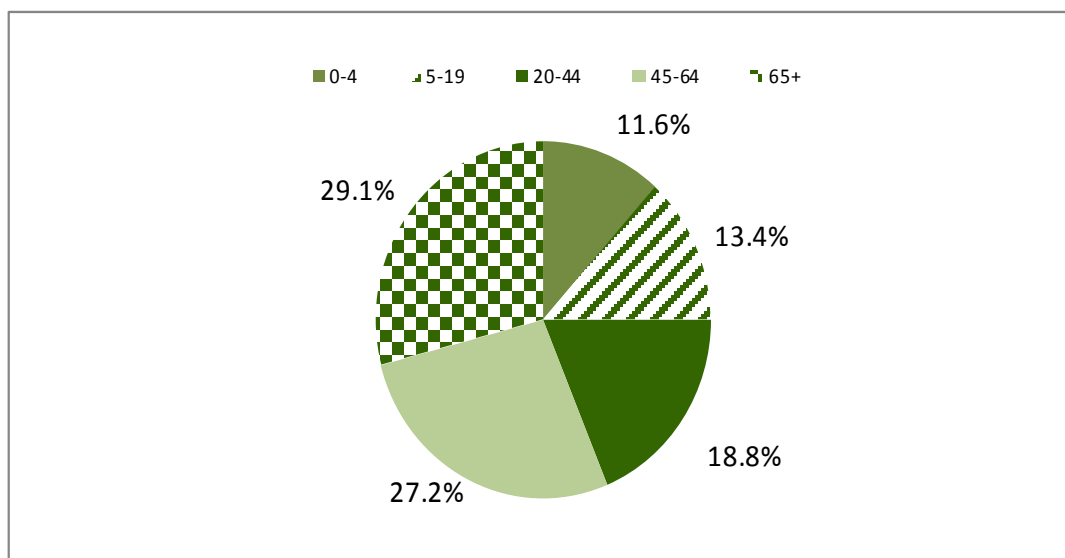


Figure 3: Percent of laboratory-confirmed influenza in NL, by age group, 2018-2019

Antiviral Resistance

Table 2: Cumulative antiviral resistance by influenza virus type and sub-type, Canada, 2018-2019

	Oseltamivir			Zanamivir			Amantadine		
	Tested	Resistant		Tested	Resistant		Tested	Resistant	
	#	#	%	#	#	%	#	#	%
A (H3N2)	93	0	0	93	0	0	59	59	100
A (H1N1)	836	3	0.4	835	0	0	313	313	100
B	32	0	0	32	0	0	--	--	--
Total	961	3	0.3	960	0	0	372	372	100

Source: Influenza and Respiratory Viruses Section, National Microbiology Laboratory (NML), Public Health Agency of Canada

Influenza and Other Respiratory Outbreaks

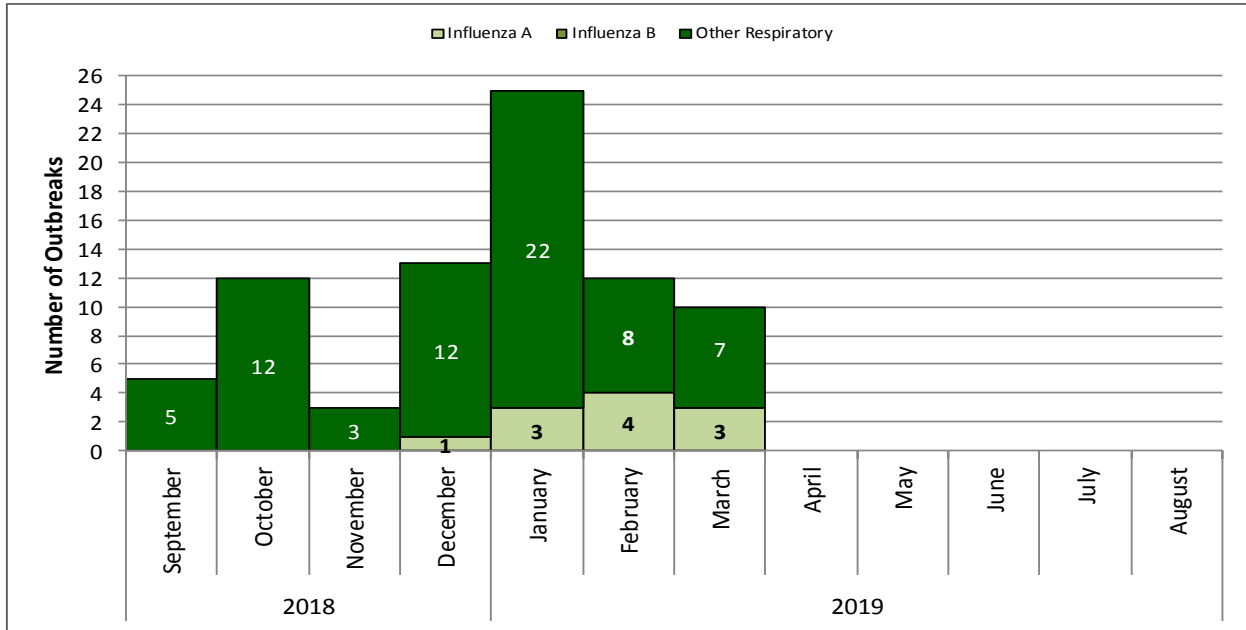


Figure 4: Number of influenza and other respiratory outbreaks, by month of onset, NL, 2018-2019

Emergency Department Influenza-like-illness

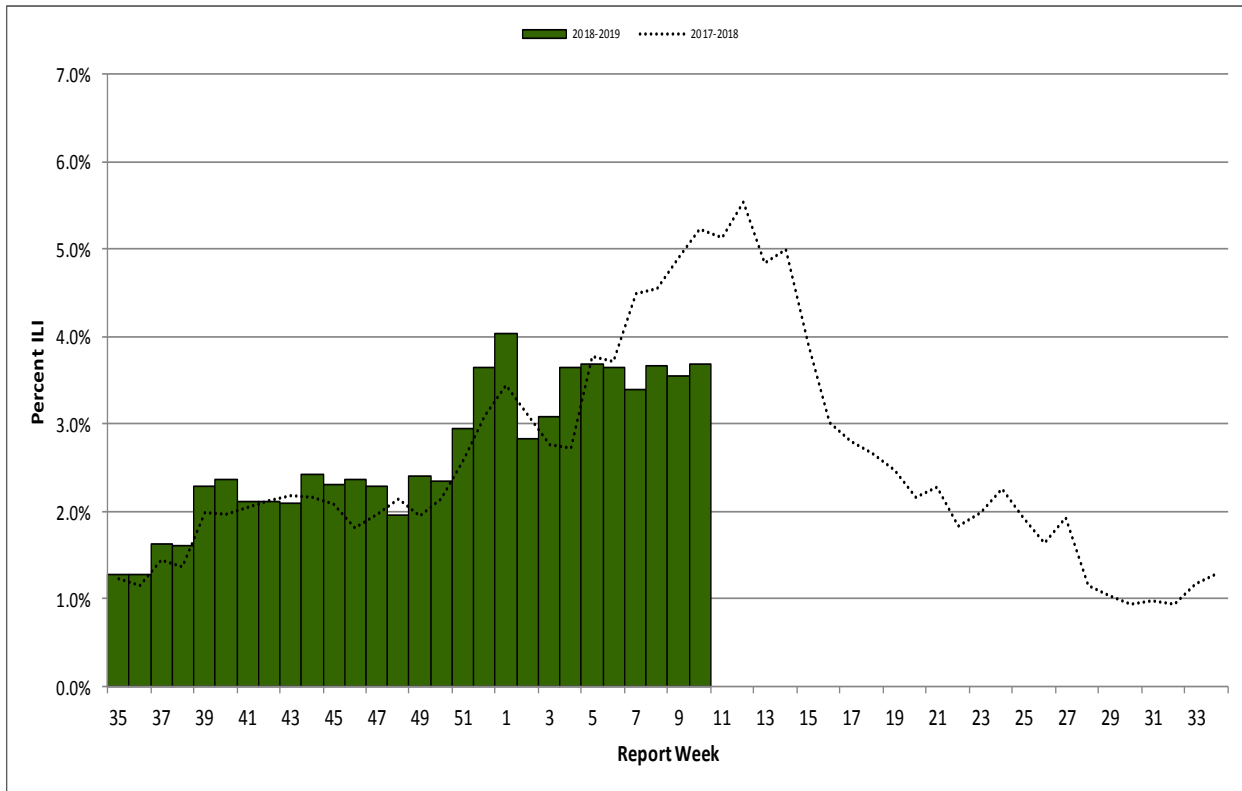


Figure 5: Percent of emergency department visits with ILI by report week, NL, 2018-2019

Source: Emergency room data provided by the four regional health authorities.

Other Respiratory Viruses

Table 3: Weekly and total number of positive respiratory virus specimens in NL, by type, 2018-2019 season

	Week 10	Total
R.S.V.	34	322
Parainfluenza virus 1	0	0
Parainfluenza virus 2	5	47
Parainfluenza virus 3	10	84
Adenovirus	3	28
Entero/Rhinovirus	3	268
hMPV	3	47



Source: Respiratory Virus Detection, Public Health Agency of Canada; Public Health and Microbiology Laboratory, Eastern Health
 *Total from August 26, 2018 to March 9, 2019.

HealthLine

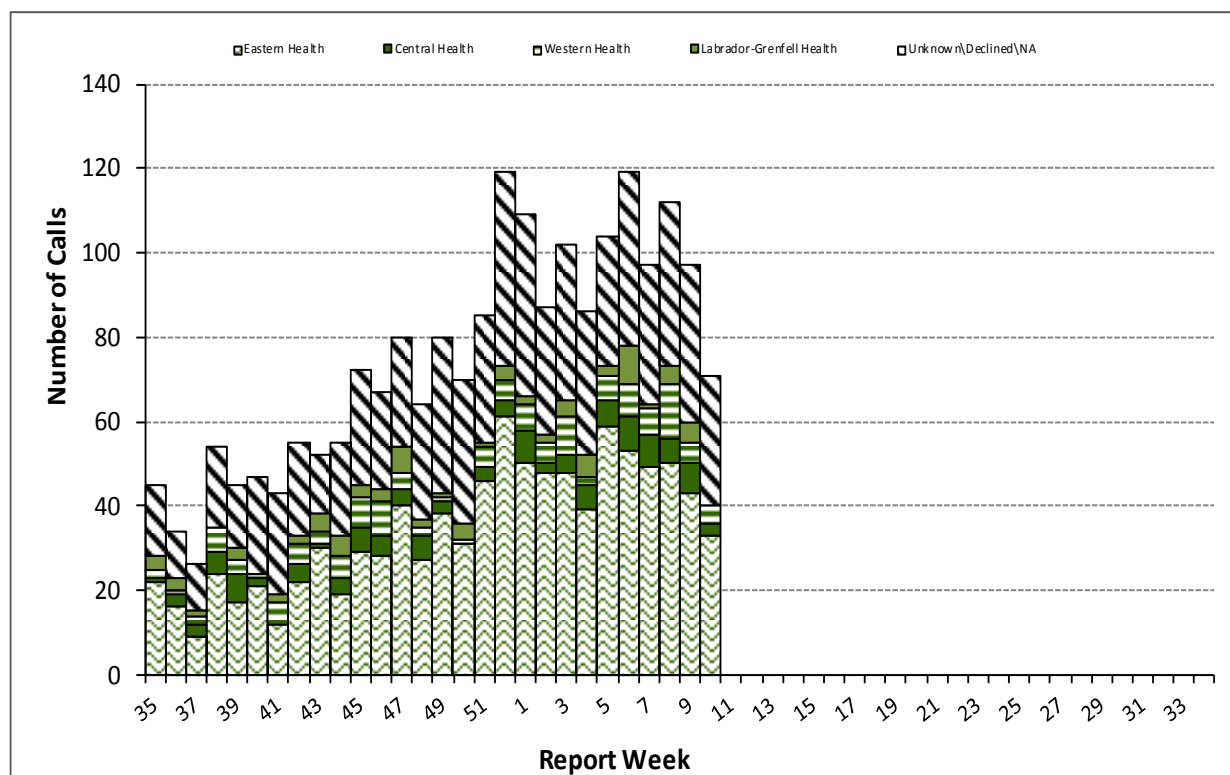


Figure 6: Number of influenza-like-illness HealthLine calls by week and RHA, NL, 2018-2019 season

Resources and Disclaimer

- ⇒ Provincial influenza statistics: <http://www.health.gov.nl.ca/health/publichealth/cdc/informationandsurveillance.html#influenza>
- ⇒ Find a Flu shot clinic in your community: http://www.health.gov.nl.ca/health/publichealth/cdc/infoprof_educ.html
- ⇒ HealthLine phone number is 811 and website <http://yourhealthline.ca/en/index.html>
- ⇒ Public Health Laboratory website is <http://publichealthlab.ca/>
- ⇒ FluWatch: <http://healthykanadians.gc.ca/diseases-conditions-maladies-affections/disease-maladie/flu-grippe/surveillance/index-eng.php>
- ⇒ Fluctuations in data occur with each report and can be attributed to continuous reporting.