

Week 12, March 17 – March 23, 2019

Department of Health and Community Services
Government of Newfoundland and Labrador



Respiratory Weekly

Highlights

- ⇒ In week 12, there were 75 laboratory-confirmed cases of influenza reported (Table 1).
- ⇒ As of March 23, 2019, there have been 593 (590A, 3B) laboratory-confirmed cases, 127 hospitalizations, 38 ICU admissions and 12 deaths.
- ⇒ Nationally, influenza activity continues to be reported in almost all regions, but is circulating at higher levels in eastern regions. In NL, activity remains high.
- ⇒ Cases have been reported in all regional health authorities, with approximately 43% of cases reported in Eastern Health (Figure 2).
- ⇒ Approximately one-quarter of cases reported to date were less than 20 years of age (Figure 3).
- ⇒ Seventeen confirmed influenza outbreaks have been reported so far this season (Figure 4).
- ⇒ Emergency room visits with influenza-like illness (ILI) have increased from last week (Figure 5).
- ⇒ Other respiratory viruses circulating in week 12 include RSV, PIV, adenovirus, adenovirus, entero/rhinovirus and hMPV (Table 3).
- ⇒ Symptomatic respiratory HealthLine calls have increased from last week (Figure 6).

Laboratory-Confirmed Cases

Table 1: Number of positive influenza cases in NL, by severity, week 12, 2018-2019 season

	Cases	Hospitalizations	ICU Admissions	Deaths
Week	75	13	7	0
Total	593	127	38	12

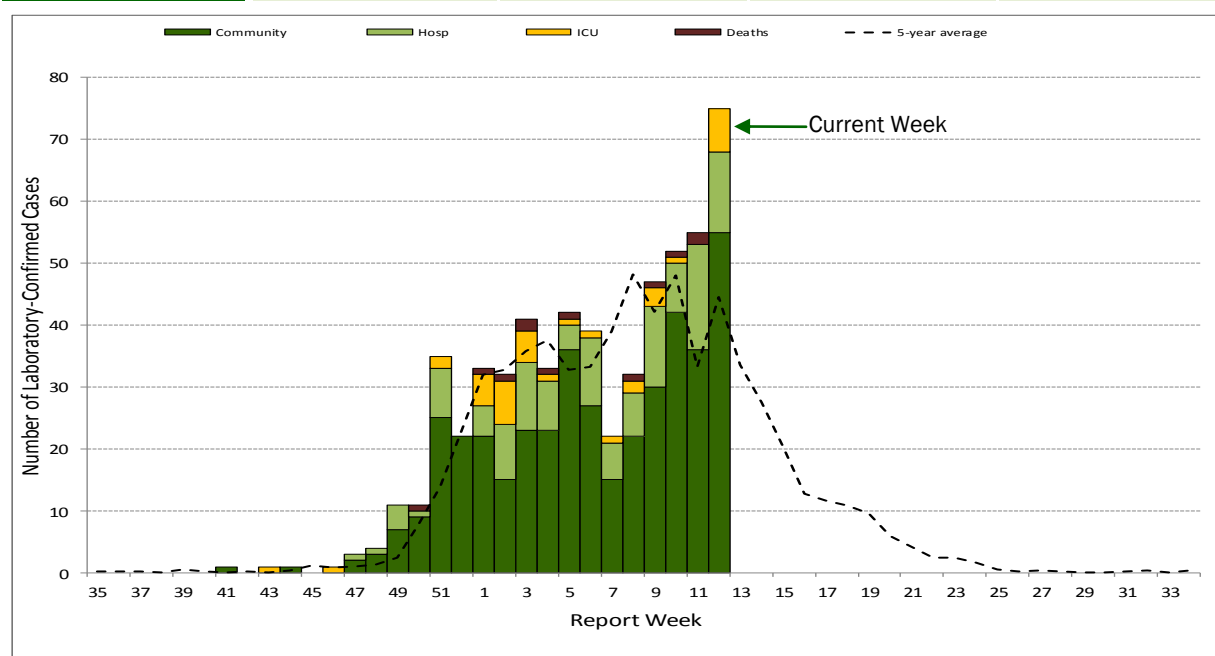


Figure 1: Number of cases, hospitalizations, ICU admissions and deaths, by week virus identified, 2018-2019

Influenza by type, RHA

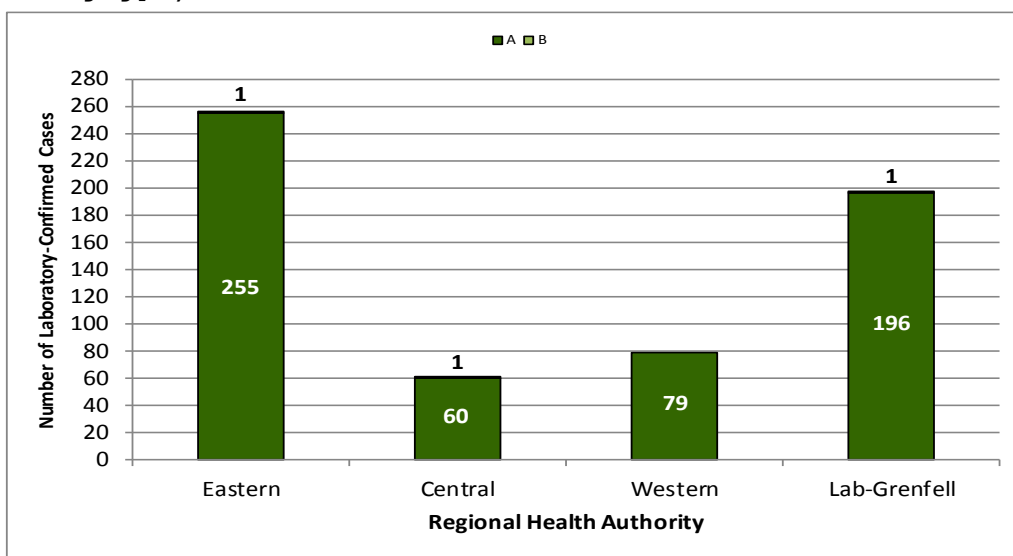


Figure 2: Total number of laboratory-confirmed influenza A and B, by Regional Health Authority, 2018-2019

Influenza by age group (n=593)

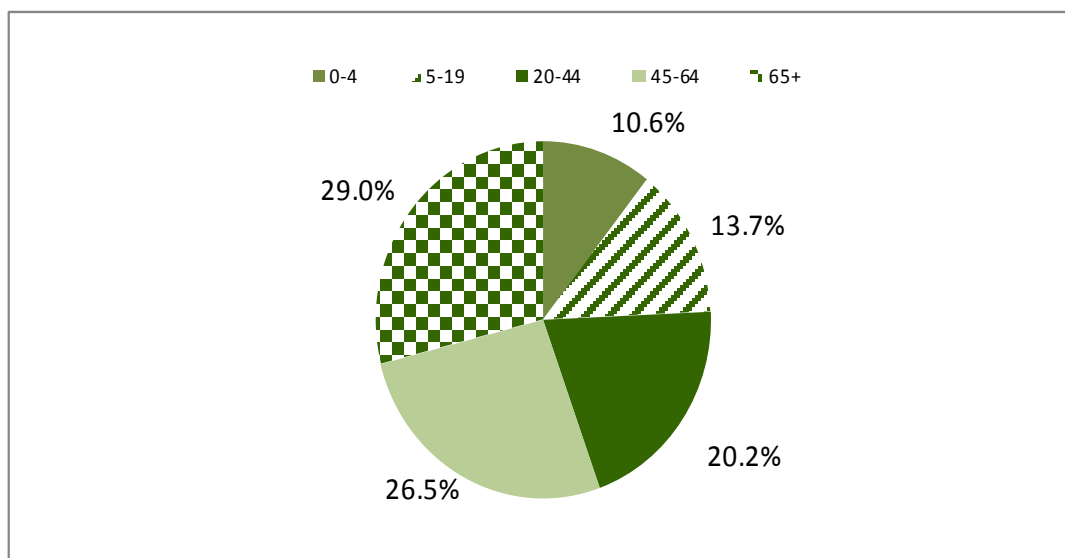


Figure 3: Percent of laboratory-confirmed influenza in NL, by age group, 2018-2019

Antiviral Resistance

Table 2: Cumulative antiviral resistance by influenza virus type and sub-type, Canada, 2018-2019

	Oseltamivir			Zanamivir			Amantadine		
	Tested	Resistant		Tested	Resistant		Tested	Resistant	
	#	#	%	#	#	%	#	#	%
A (H3N2)	103	0	0	103	0	0	64	64	100
A (H1N1)	879	4	0.5	878	0	0	324	324	100
B	35	0	0	35	0	0	--	--	--
Total	1017	4	0.4	1016	0	0	388	388	100

Source: Influenza and Respiratory Viruses Section, National Microbiology Laboratory (NML), Public Health Agency of Canada

Influenza and Other Respiratory Outbreaks

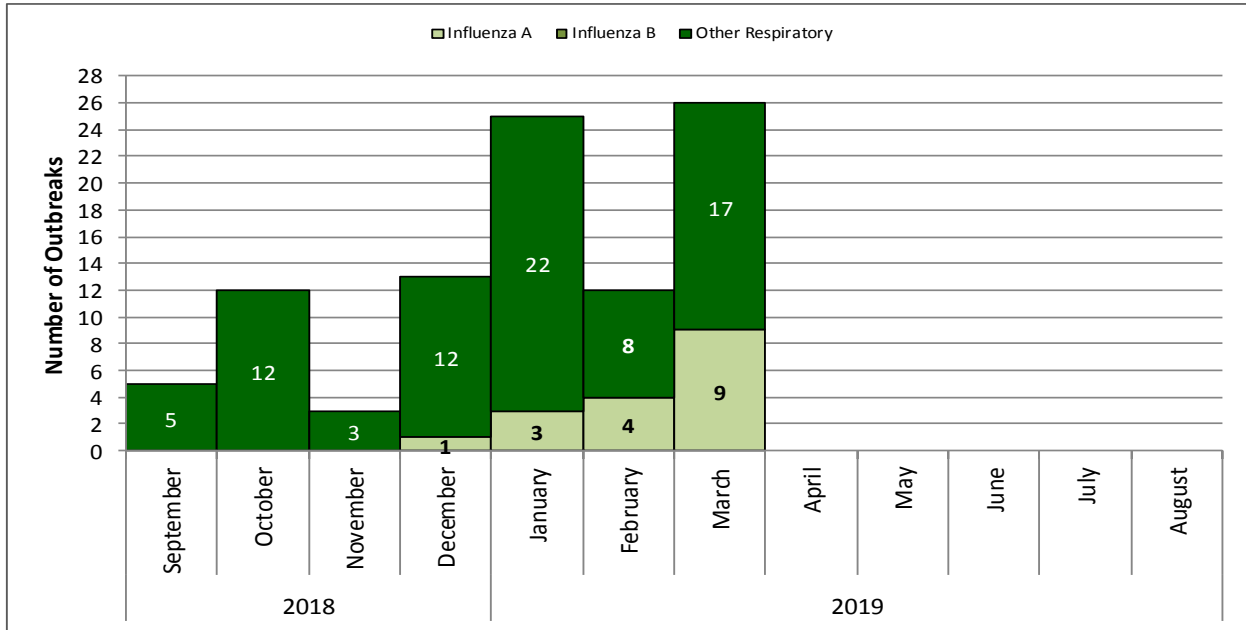


Figure 4: Number of influenza and other respiratory outbreaks, by month of onset, NL, 2018-2019

Emergency Department Influenza-like-illness

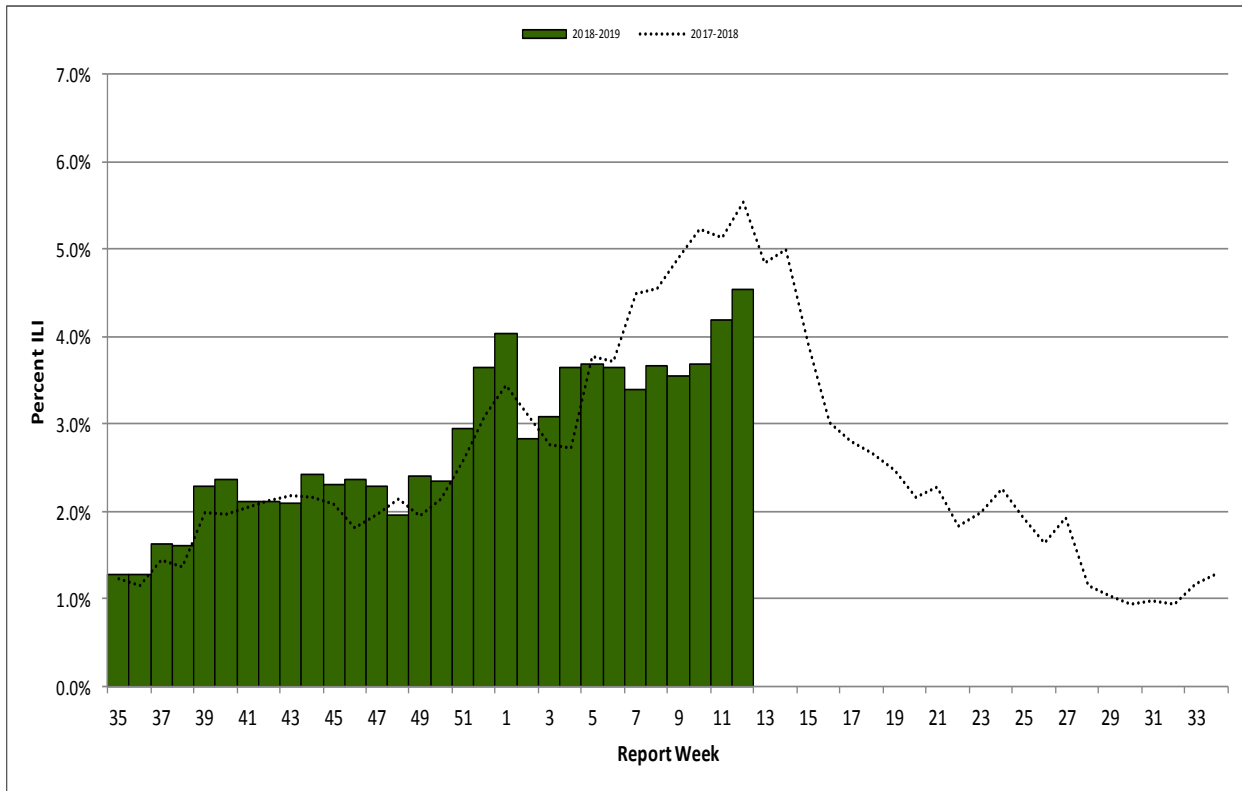


Figure 5: Percent of emergency department visits with ILI by report week, NL, 2018-2019

Source: Emergency room data provided by the four regional health authorities.

Other Respiratory Viruses

Table 3: Weekly and total number of positive respiratory virus specimens in NL, by type, 2018-2019 season

	Week 12	Total
R.S.V.	22	366
Parainfluenza virus 1	0	0
Parainfluenza virus 2	1	50
Parainfluenza virus 3	10	98
Adenovirus	3	32
Entero/Rhinovirus	5	276
hMPV	15	71



Source: Respiratory Virus Detection, Public Health Agency of Canada; Public Health and Microbiology Laboratory, Eastern Health
 *Total from August 26, 2018 to March 23, 2019.

HealthLine

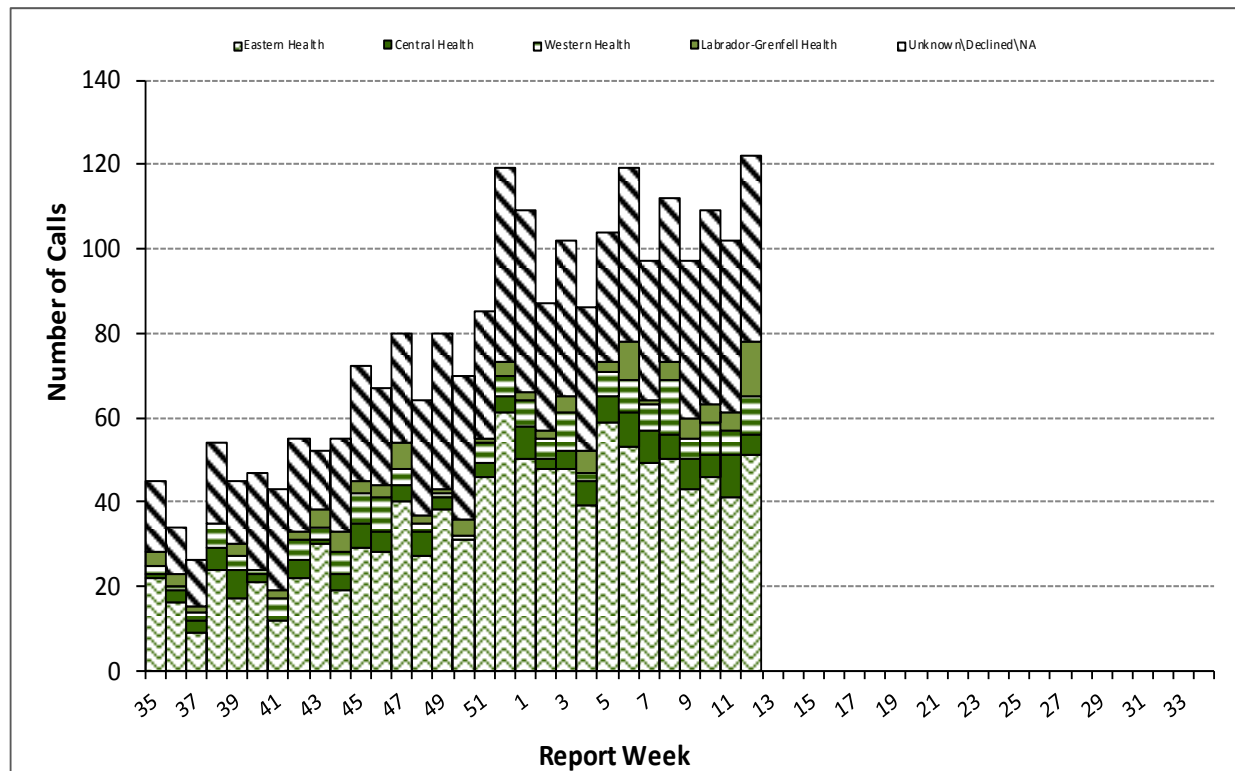


Figure 6: Number of influenza-like-illness HealthLine calls by week and RHA, NL, 2018-2019 season

Resources and Disclaimer

- ⇒ Provincial influenza statistics: <http://www.health.gov.nl.ca/health/publichealth/cdc/informationandsurveillance.html#influenza>
- ⇒ Find a Flu shot clinic in your community: http://www.health.gov.nl.ca/health/publichealth/cdc/infoforpros_edu.html
- ⇒ HealthLine phone number is 811 and website <http://yourhealthline.ca/en/index.html>
- ⇒ Public Health Laboratory website is <http://publichealthlab.ca/>
- ⇒ FluWatch: <http://healthykanadians.gc.ca/diseases-conditions-maladies-affections/disease-maladie/flu-grippe/surveillance/index-eng.php>
- ⇒ Fluctuations in data occur with each report and can be attributed to continuous reporting.