

Week 19, May 5 – May 11, 2019

Department of Health and Community Services
Government of Newfoundland and Labrador



Respiratory Weekly

Highlights

* As of April 12th, testing for influenza and other respiratory pathogens has been scaled down to focus on acute patient care services.

- ⇒ In week 19, there were 7 laboratory-confirmed cases of influenza reported (Table 1).
- ⇒ As of May 11, 2019, there have been 1017 (1013A, 4B) laboratory-confirmed cases, 267 hospitalizations, 63 ICU admissions and 25 deaths.
- ⇒ Nationally, influenza activity is declining. Influenza A (H1N1)pdm09 is the predominant subtype circulating this season.
- ⇒ Cases have been reported in all regional health authorities, with approximately 45% of cases reported in Eastern Health (Figure 2).
- ⇒ Approximately 42% of cases reported to date were less than 45 years of age (Figure 3).
- ⇒ Thirty-five confirmed influenza outbreaks have been reported so far this season (Figure 4).
- ⇒ Emergency room visits with influenza-like illness (ILI) have decreased from last week (Figure 5).
- ⇒ Other respiratory viruses circulating in week 19 include RSV, PIV, entero/rhinovirus and hMPV (Table 3).
- ⇒ Symptomatic respiratory HealthLine calls have decreased from last week (Figure 6).

Laboratory-Confirmed Cases

Table 1: Number of positive influenza cases in NL, by severity, week 19, 2018-2019 season

	Cases	Hospitalizations	ICU Admissions	Deaths
Week	7	5	0	0
Total	1017	267	63	25

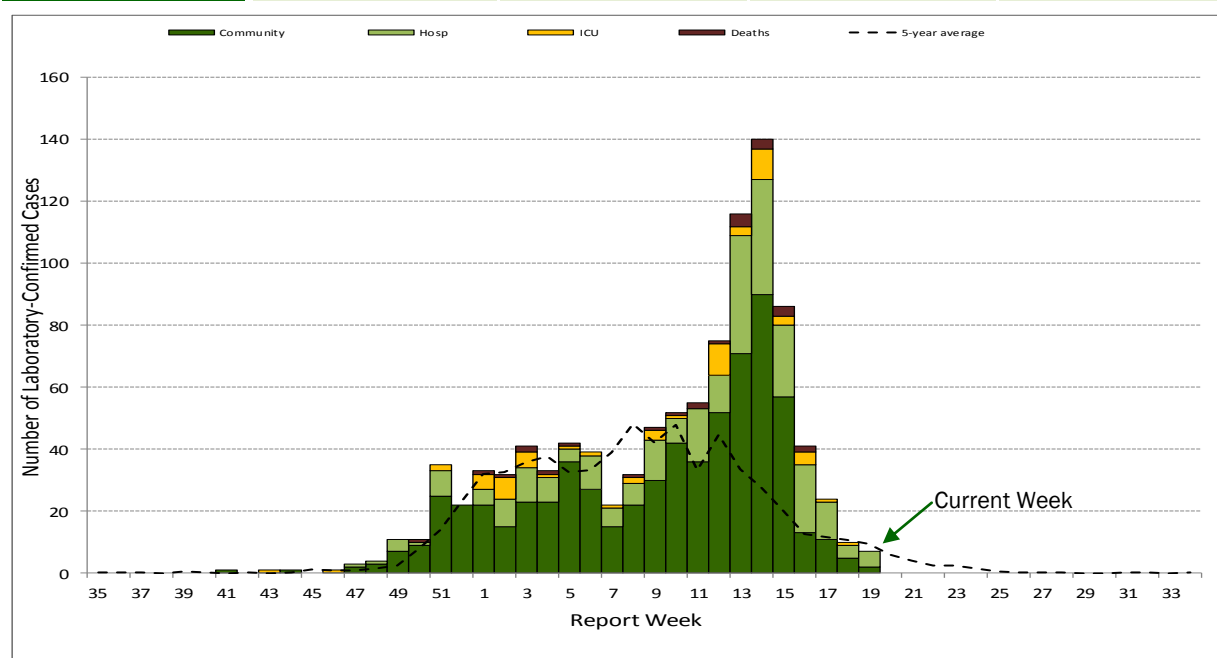


Figure 1: Number of cases, hospitalizations, ICU admissions and deaths, by week virus identified, 2018-2019

Influenza by type, RHA

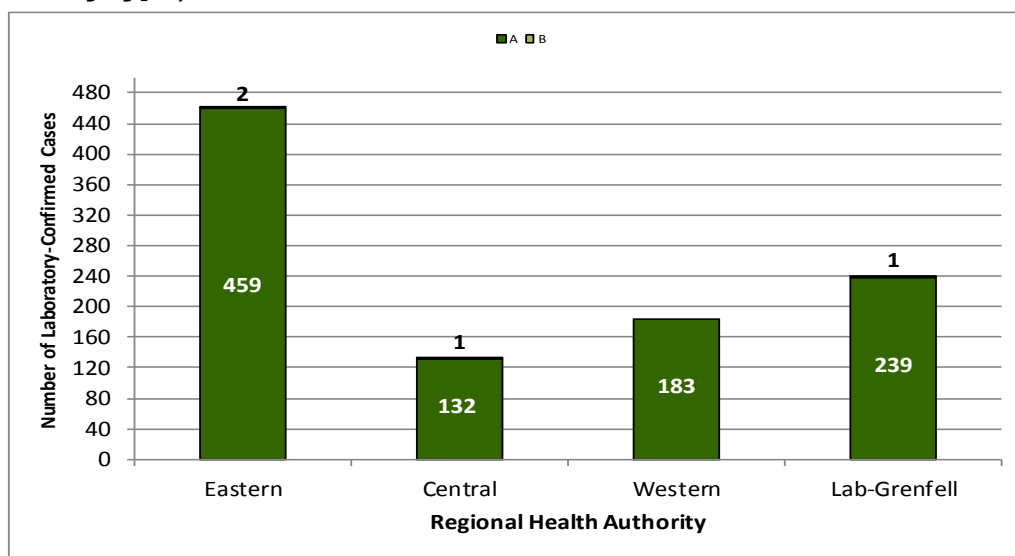


Figure 2: Total number of laboratory-confirmed influenza A and B, by Regional Health Authority, 2018-2019

Influenza by age group (n=1017)

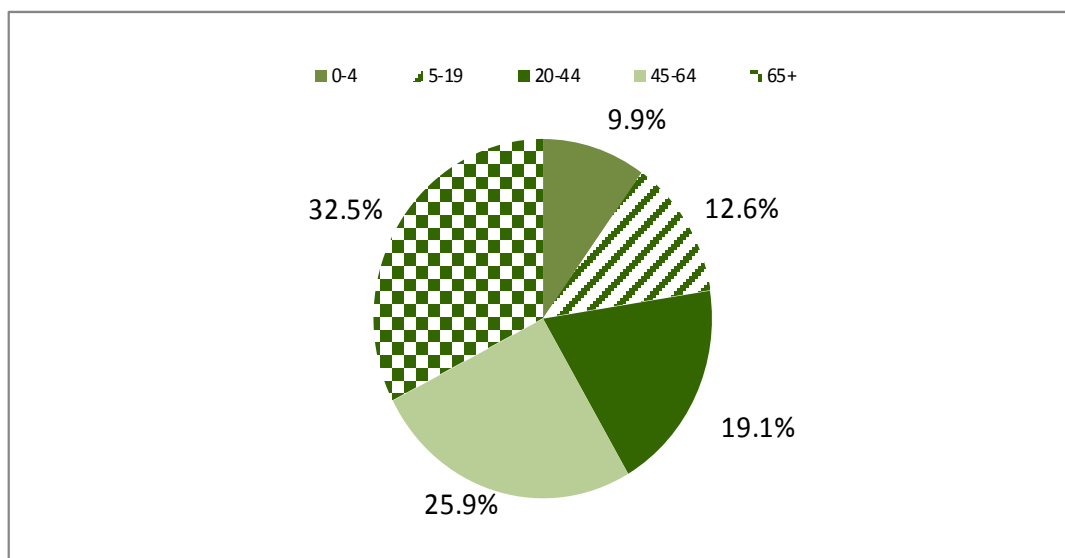


Figure 3: Percent of laboratory-confirmed influenza in NL, by age group, 2018-2019

Antiviral Resistance

Table 2: Cumulative antiviral resistance by influenza virus type and sub-type, Canada, 2018-2019

	Oseltamivir			Zanamivir			Amantadine		
	Tested	Resistant		Tested	Resistant		Tested	Resistant	
	#	#	%	#	#	%	#	#	%
A (H3N2)	159	0	0	159	0	0	89	89	100
A (H1N1)	1024	4	0.4	1023	0	0	360	360	100
B	79	0	0	79	0	0	--	--	--
Total	1262	4	0.3	1261	0	0	449	449	100

Source: Influenza and Respiratory Viruses Section, National Microbiology Laboratory (NML), Public Health Agency of Canada

Influenza and Other Respiratory Outbreaks

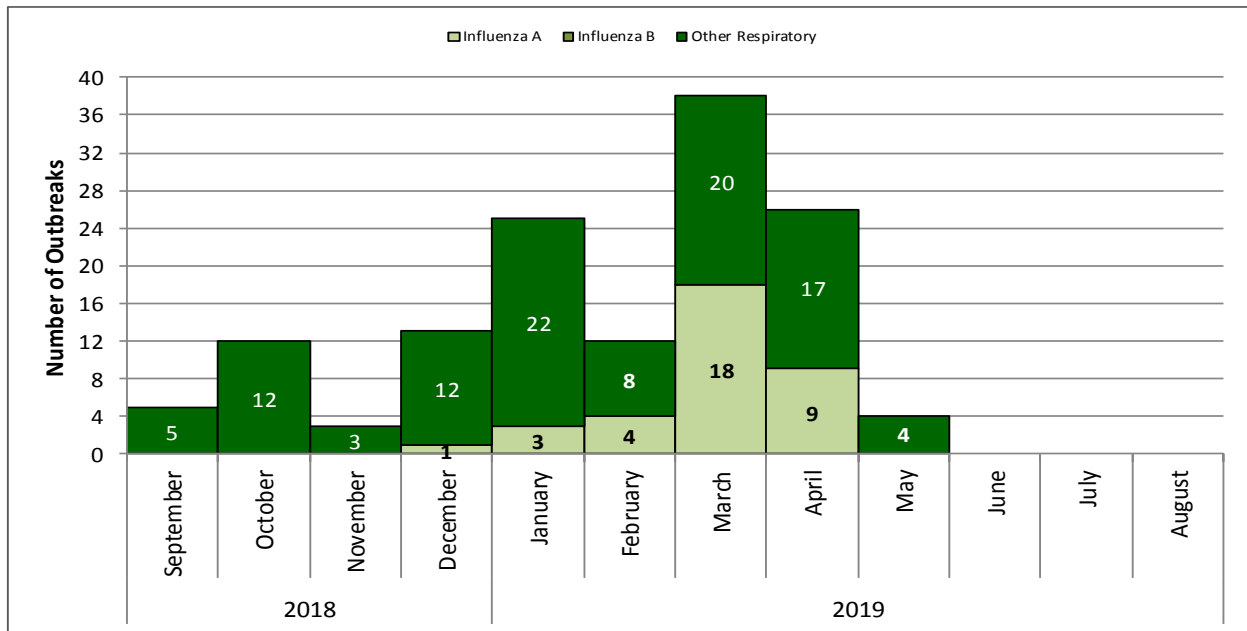


Figure 4: Number of influenza and other respiratory outbreaks, by month of onset, NL, 2018-2019

Emergency Department Influenza-like-illness

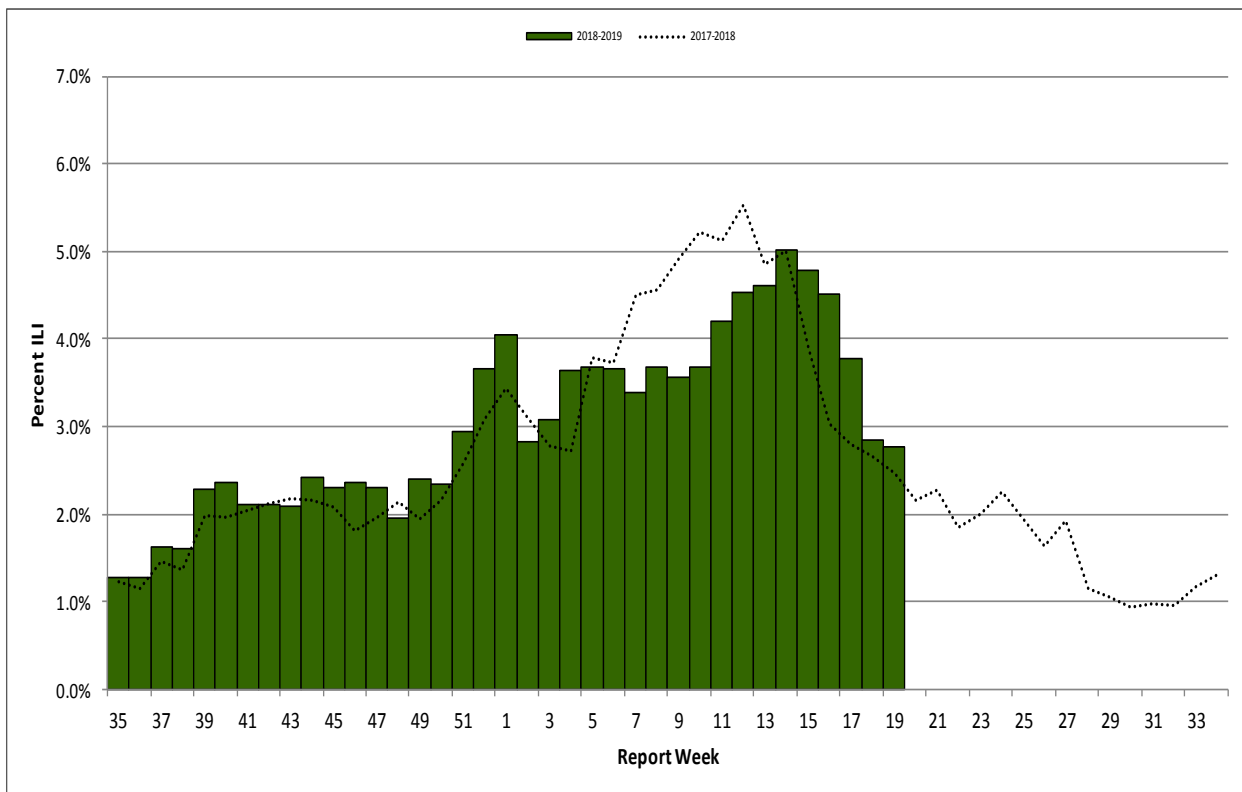


Figure 5: Percent of emergency department visits with ILI by report week, NL, 2018-2019

Source: Emergency room data provided by the four regional health authorities.

Other Respiratory Viruses

Table 3: Weekly and total number of positive respiratory virus specimens in NL, by type, 2018-2019 season

	Week 19	Total
R.S.V.	4	477
Parainfluenza virus 1	0	8
Parainfluenza virus 2	0	58
Parainfluenza virus 3	4	160
Adenovirus	0	37
Entero/Rhinovirus	2	314
hMPV	7	189



Source: Respiratory Virus Detection, Public Health Agency of Canada; Public Health and Microbiology Laboratory, Eastern Health
 *Total from August 26, 2018 to May 11, 2019.

HealthLine

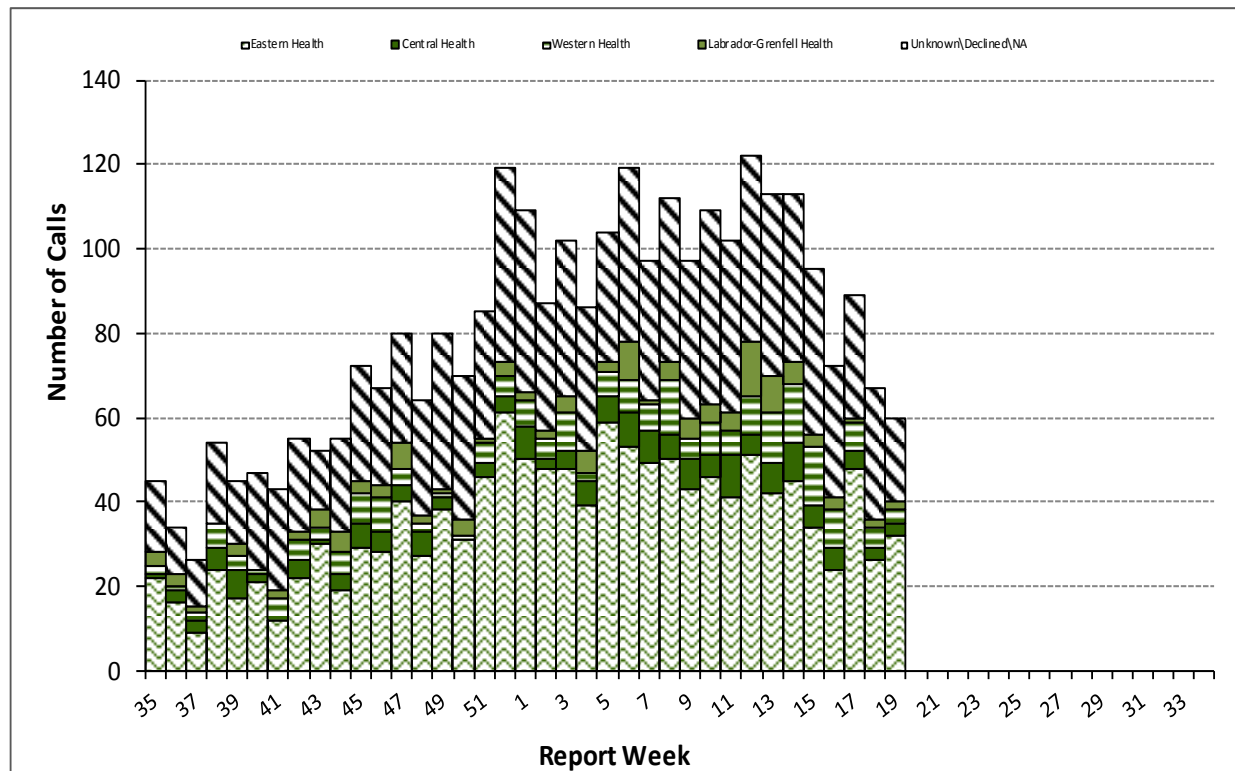


Figure 6: Number of influenza-like-illness HealthLine calls by week and RHA, NL, 2018-2019 season

Resources and Disclaimer

- ⇒ Provincial influenza statistics: <http://www.health.gov.nl.ca/health/publichealth/cdc/informationandsurveillance.html#influenza>
- ⇒ Find a Flu shot clinic in your community: http://www.health.gov.nl.ca/health/publichealth/cdc/infoforpros_edu.html
- ⇒ HealthLine phone number is 811 and website <http://yourhealthline.ca/en/index.html>
- ⇒ Public Health Laboratory website is <http://publichealthlab.ca/>
- ⇒ FluWatch: <http://healthycanadians.gc.ca/diseases-conditions-maladies-affections/disease-maladie/flu-grippe/surveillance/index-eng.php>
- ⇒ Fluctuations in data occur with each report and can be attributed to continuous reporting.