

Week 21, May 19 – May 25, 2019

Department of Health and Community Services  
Government of Newfoundland and Labrador



# Respiratory Weekly

## Highlights

\* As of April 12th, testing for influenza and other respiratory pathogens has been scaled down to focus on acute patient care services.

- ⇒ In week 21, there were two laboratory-confirmed cases of influenza reported (Table 1).
- ⇒ As of May 25, 2019, there have been 1022 (1018A, 4B) laboratory-confirmed cases, 269 hospitalizations, 63 ICU admissions and 26 deaths.
- ⇒ Nationally, influenza activity continues to decline. Influenza A (H1N1)pdm09 is the predominant subtype circulating this season.
- ⇒ Cases have been reported in all regional health authorities, with approximately 45% of cases reported in Eastern Health (Figure 2).
- ⇒ Approximately 41% of cases reported to date were less than 45 years of age (Figure 3).
- ⇒ Thirty-six confirmed influenza outbreaks have been reported so far this season (Figure 4).
- ⇒ Emergency room visits with influenza-like illness (ILI) have decreased from last week (Figure 5).
- ⇒ Other respiratory viruses circulating in week 21 include RSV, PIV, adenovirus, entero/rhinovirus and hMPV (Table 3).
- ⇒ Symptomatic respiratory HealthLine calls have increased from last week (Figure 6).

## Laboratory-Confirmed Cases

Table 1: Number of positive influenza cases in NL, by severity, week 21, 2018-2019 season

	Cases	Hospitalizations	ICU Admissions	Deaths
Week	2	0	0	1
Total	1022	269	63	26

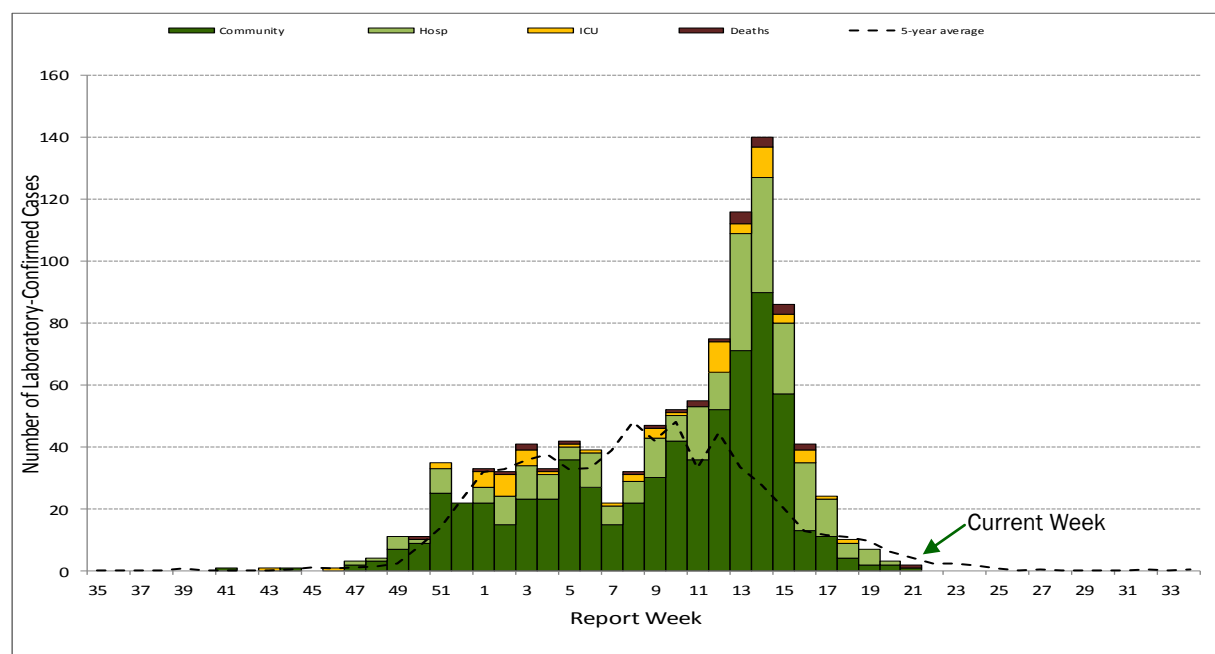


Figure 1: Number of cases, hospitalizations, ICU admissions and deaths, by week virus identified, 2018-2019

**Influenza by type, RHA**

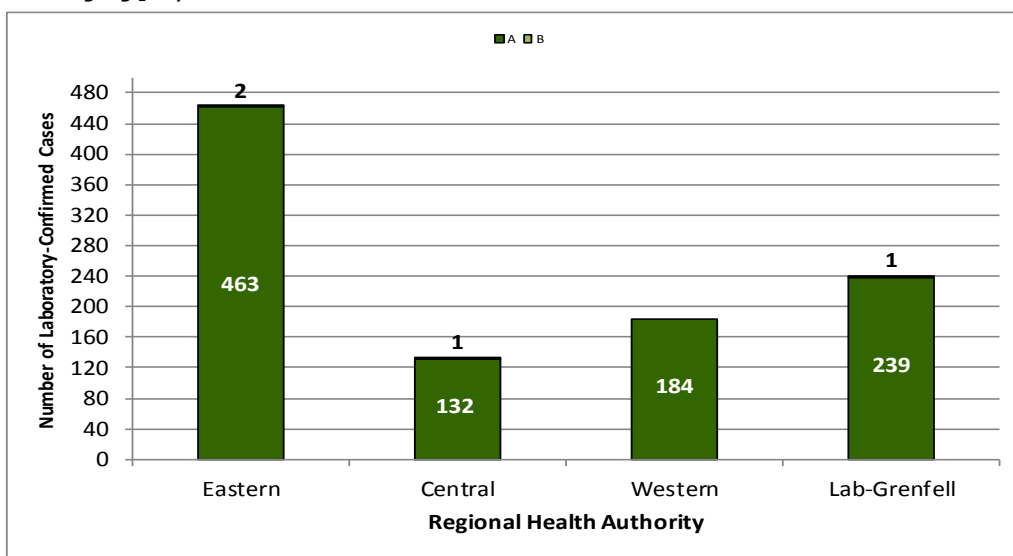


Figure 2: Total number of laboratory-confirmed influenza A and B, by Regional Health Authority, 2018-2019

**Influenza by age group (n=1022)**

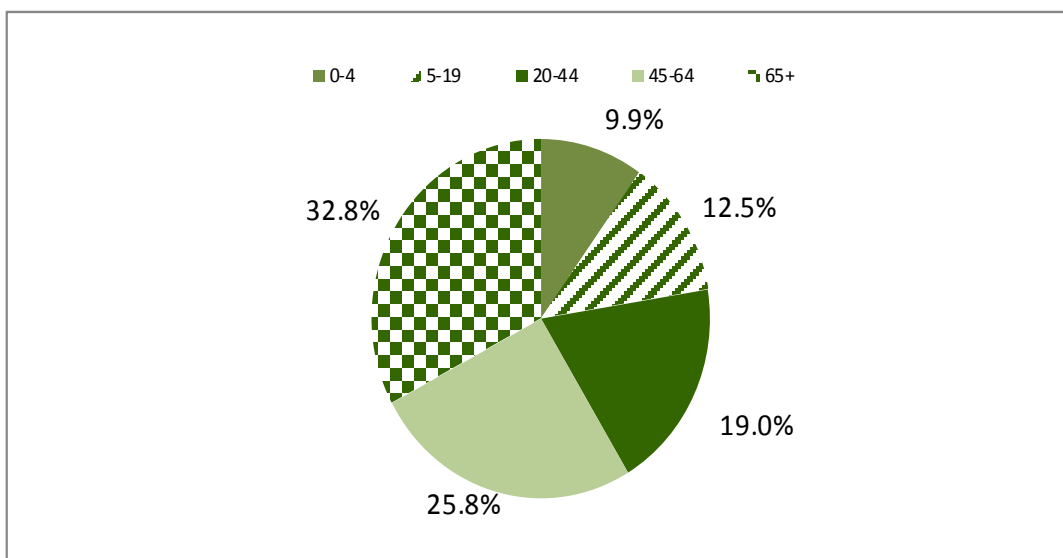


Figure 3: Percent of laboratory-confirmed influenza in NL, by age group, 2018-2019

**Antiviral Resistance**

Table 2: Cumulative antiviral resistance by influenza virus type and sub-type, Canada, 2018-2019

	Oseltamivir			Zanamivir			Amantadine		
	Tested	Resistant		Tested	Resistant		Tested	Resistant	
	#	#	%	#	#	%	#	#	%
A (H3N2)	178	0	0	178	0	0	99	99	100
A (H1N1)	1049	4	0.4	1048	0	0	370	370	100
B	84	0	0	84	0	0	--	--	--
<b>Total</b>	<b>1311</b>	<b>4</b>	<b>0.3</b>	<b>1310</b>	<b>0</b>	<b>0</b>	<b>469</b>	<b>469</b>	<b>100</b>

Source: Influenza and Respiratory Viruses Section, National Microbiology Laboratory (NML), Public Health Agency of Canada

**Influenza and Other Respiratory Outbreaks**

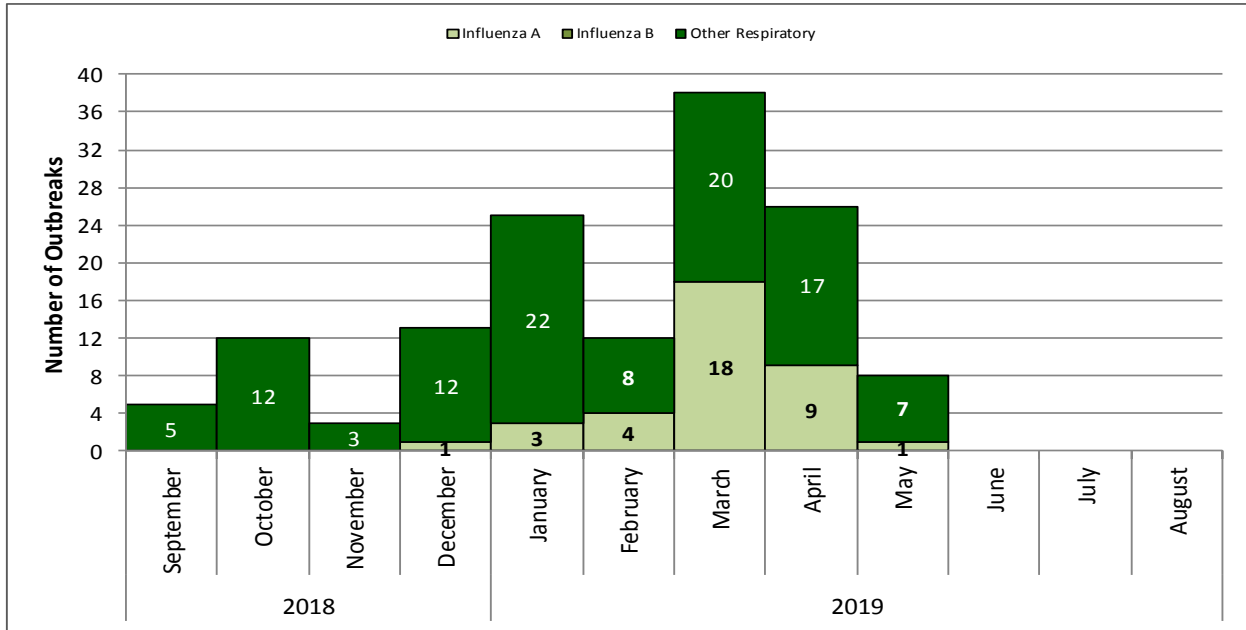


Figure 4: Number of influenza and other respiratory outbreaks, by month of onset, NL, 2018-2019

**Emergency Department Influenza-like-illness**

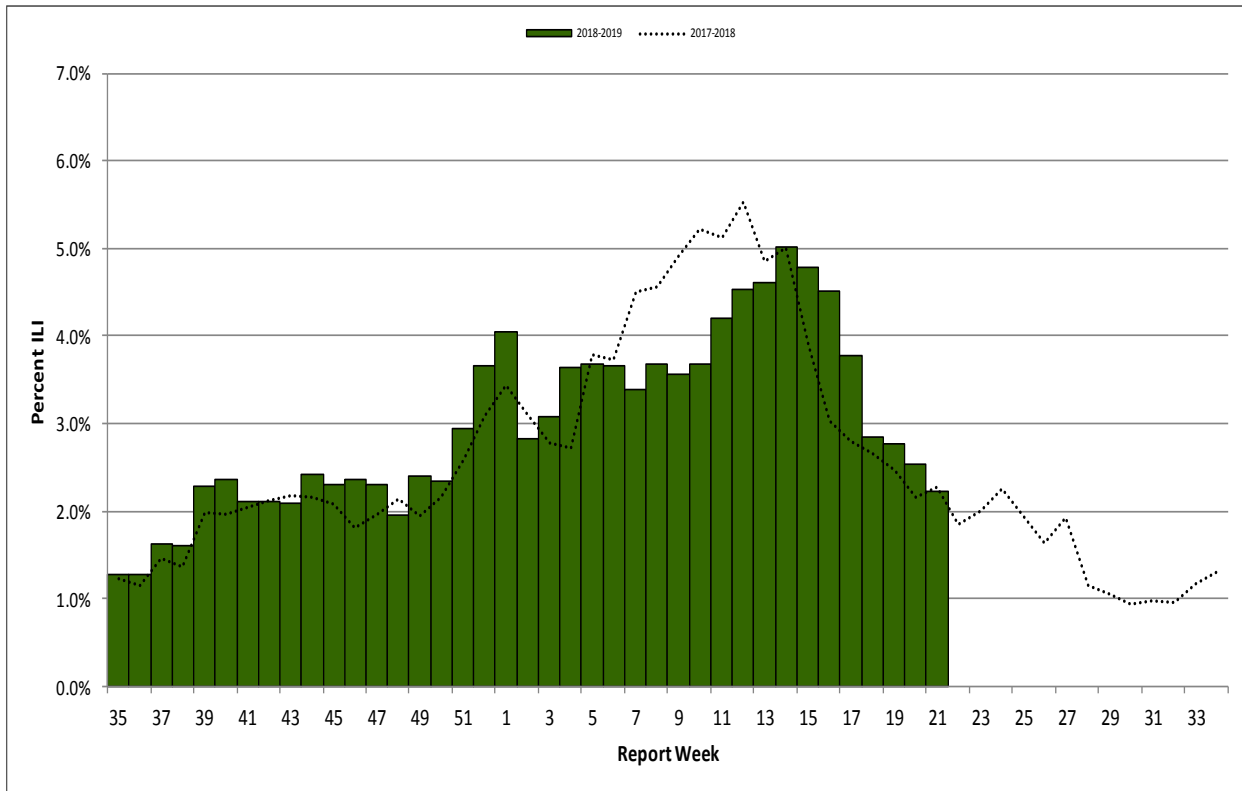


Figure 5: Percent of emergency department visits with ILI by report week, NL, 2018-2019

Source: Emergency room data provided by the four regional health authorities.

**Other Respiratory Viruses**

Table 3: Weekly and total number of positive respiratory virus specimens in NL, by type, 2018-2019 season

	Week 21	Total
R.S.V.	2	480
Parainfluenza virus 1	0	9
Parainfluenza virus 2	0	58
Parainfluenza virus 3	5	168
Adenovirus	1	39
Entero/Rhinovirus	5	322
hMPV	6	207



Source: Respiratory Virus Detection, Public Health Agency of Canada; Public Health and Microbiology Laboratory, Eastern Health  
 \*Total from August 26, 2018 to May 25, 2019.

**HealthLine**

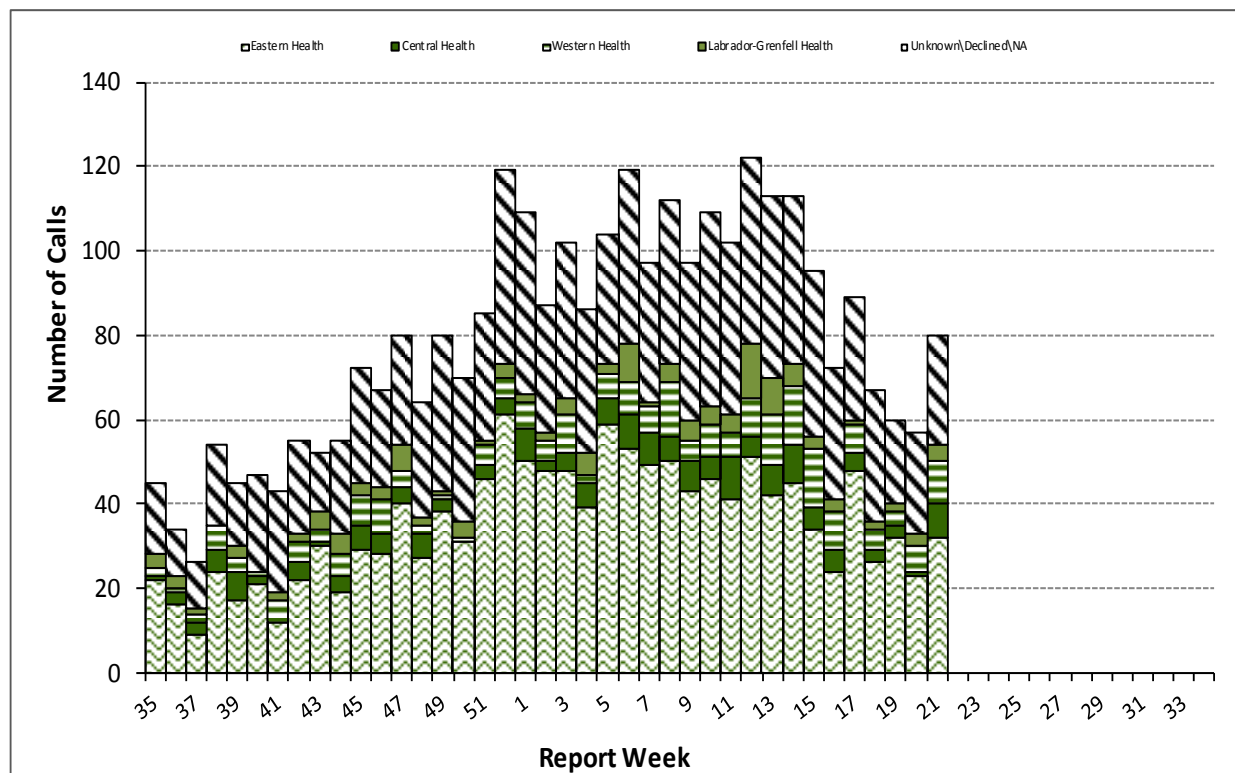


Figure 6: Number of influenza-like-illness HealthLine calls by week and RHA, NL, 2018-2019 season

**Resources and Disclaimer**

- ⇒ Provincial influenza statistics: <http://www.health.gov.nl.ca/health/publichealth/cdc/informationandsurveillance.html#influenza>
- ⇒ Find a Flu shot clinic in your community: [http://www.health.gov.nl.ca/health/publichealth/cdc/infoforpros\\_edu.html](http://www.health.gov.nl.ca/health/publichealth/cdc/infoforpros_edu.html)
- ⇒ HealthLine phone number is 811 and website <http://yourhealthline.ca/en/index.html>
- ⇒ Public Health Laboratory website is <http://publichealthlab.ca/>
- ⇒ FluWatch: <http://healthykanadians.gc.ca/diseases-conditions-maladies-affections/disease-maladie/flu-grippe/surveillance/index-eng.php>
- ⇒ Fluctuations in data occur with each report and can be attributed to continuous reporting.