

Week 5, January 27 – February 2, 2019

Department of Health and Community Services
Government of Newfoundland and Labrador



Respiratory Weekly

Highlights

- ⇒ In week 5, there were 40 laboratory-confirmed cases of influenza reported (Table 1).
- ⇒ As of February 2, 2019, there have been 269 (267A, 2B) laboratory-confirmed cases, 52 hospitalizations, 22 ICU admissions and seven deaths.
- ⇒ Across Canada, eastern regions are reporting higher levels of activity compared to western regions. Influenza A (H1N1)pdm09 is the most common influenza virus circulating in Canada.
- ⇒ Cases have been reported in all regional health authorities, with almost half of cases reported in Labrador-Grenfell Health (Figure 2).
- ⇒ Over one-quarter (27%) of cases reported to date were less than 20 years of age (Figure 3).
- ⇒ Four confirmed influenza outbreaks have been reported so far this season (Figure 4).
- ⇒ Emergency room visits with influenza-like illness (ILI) and symptomatic respiratory HealthLine calls have increased from last week (Figures 5 and 6).
- ⇒ Other respiratory viruses circulating in week 5 include RSV, PIV, adenovirus, entero/rhinovirus and hMPV (Table 3).
- ⇒ **Did you get it? Influenza vaccination remains one of the best methods to protect you and your children and prevent the spread of the virus!**

Laboratory-Confirmed Cases

Table 1: Number of positive influenza cases in NL, by severity, week 5, 2018-2019 season

	Cases	Hospitalizations	ICU Admissions	Deaths
Week	40	4	1	1
Total	269	52	22	7

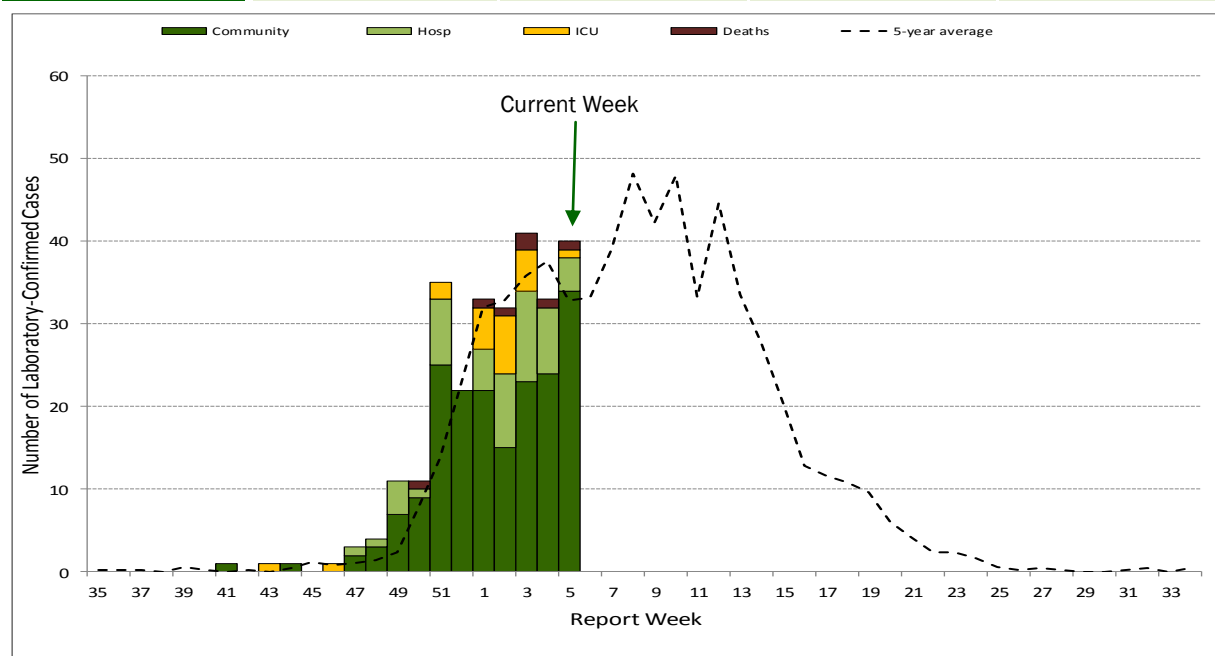


Figure 1: Number of cases, hospitalizations, ICU admissions and deaths, by week virus identified, 2018-2019

Influenza by type, RHA

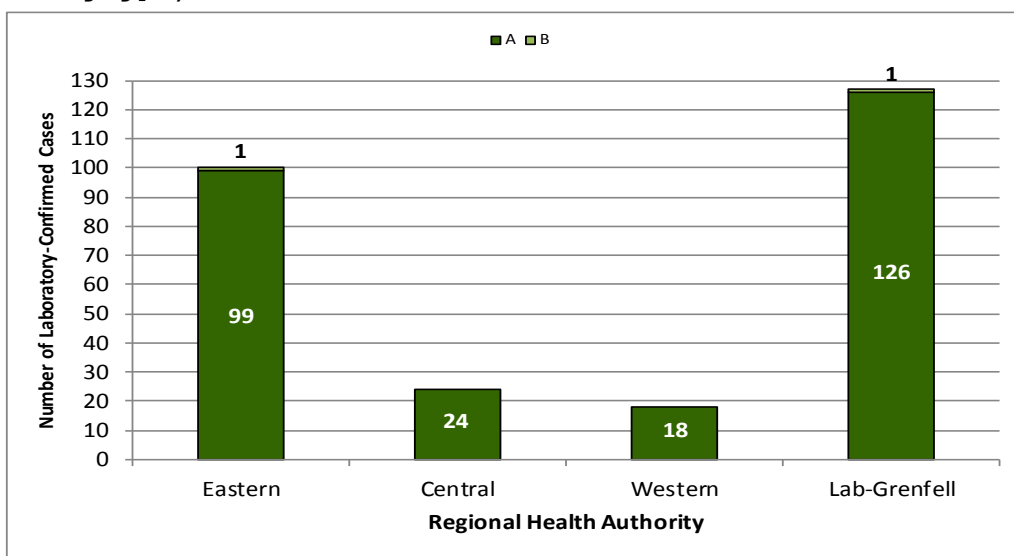


Figure 2: Total number of laboratory-confirmed influenza A and B, by Regional Health Authority, 2018-2019

Influenza by age group (n=269)

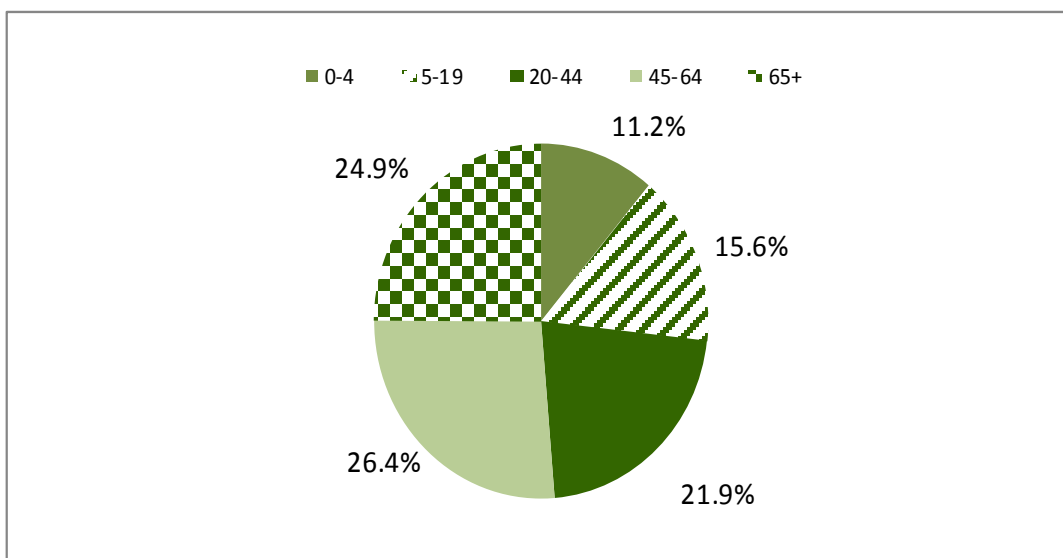


Figure 3: Percent of laboratory-confirmed influenza in NL, by age group, 2018-2019

Antiviral Resistance

Table 2: Cumulative antiviral resistance by influenza virus type and sub-type, Canada, 2018-2019

	Oseltamivir			Zanamivir			Amantadine		
	Tested	Resistant		Tested	Resistant		Tested	Resistant	
	#	#	%	#	#	%	#	#	%
A (H3N2)	53	0	0	53	0	0	46	46	100
A (H1N1)	593	1	0.2	593	0	0	276	276	100
B	18	0	0	18	0	0	--	--	--
Total	664	0	0.2	664	0	0	322	322	100

Source: Influenza and Respiratory Viruses Section, National Microbiology Laboratory (NML), Public Health Agency of Canada

Influenza and Other Respiratory Outbreaks

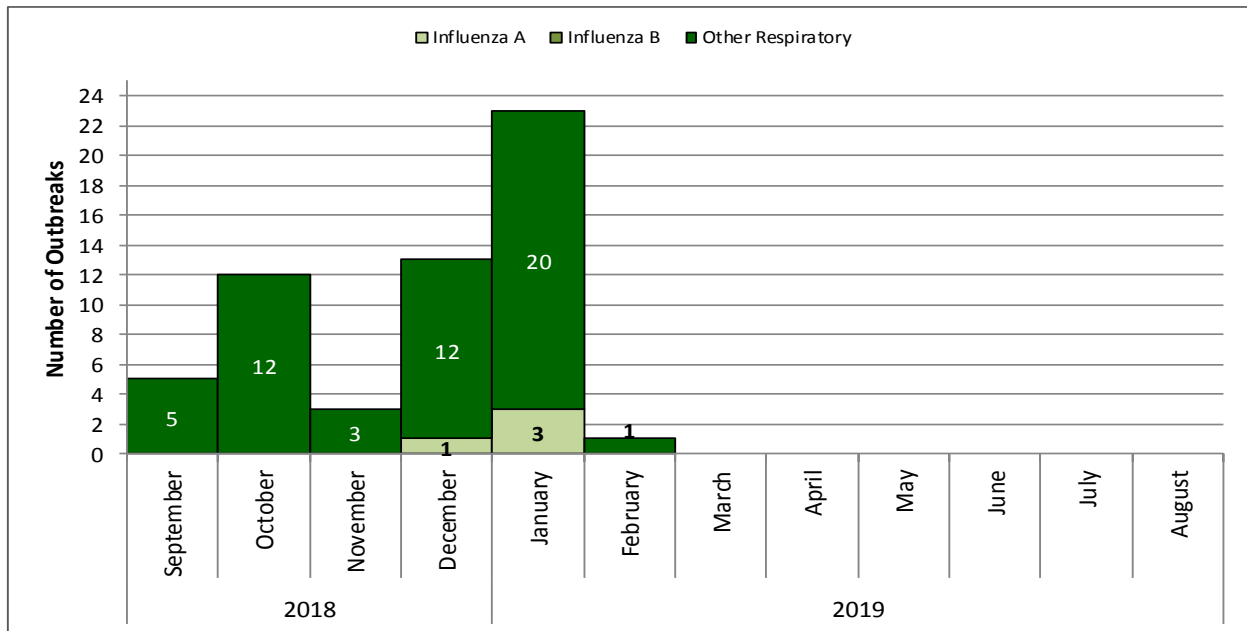


Figure 4: Number of influenza and other respiratory outbreaks, by month of onset, NL, 2018-2019

Emergency Department Influenza-like-illness

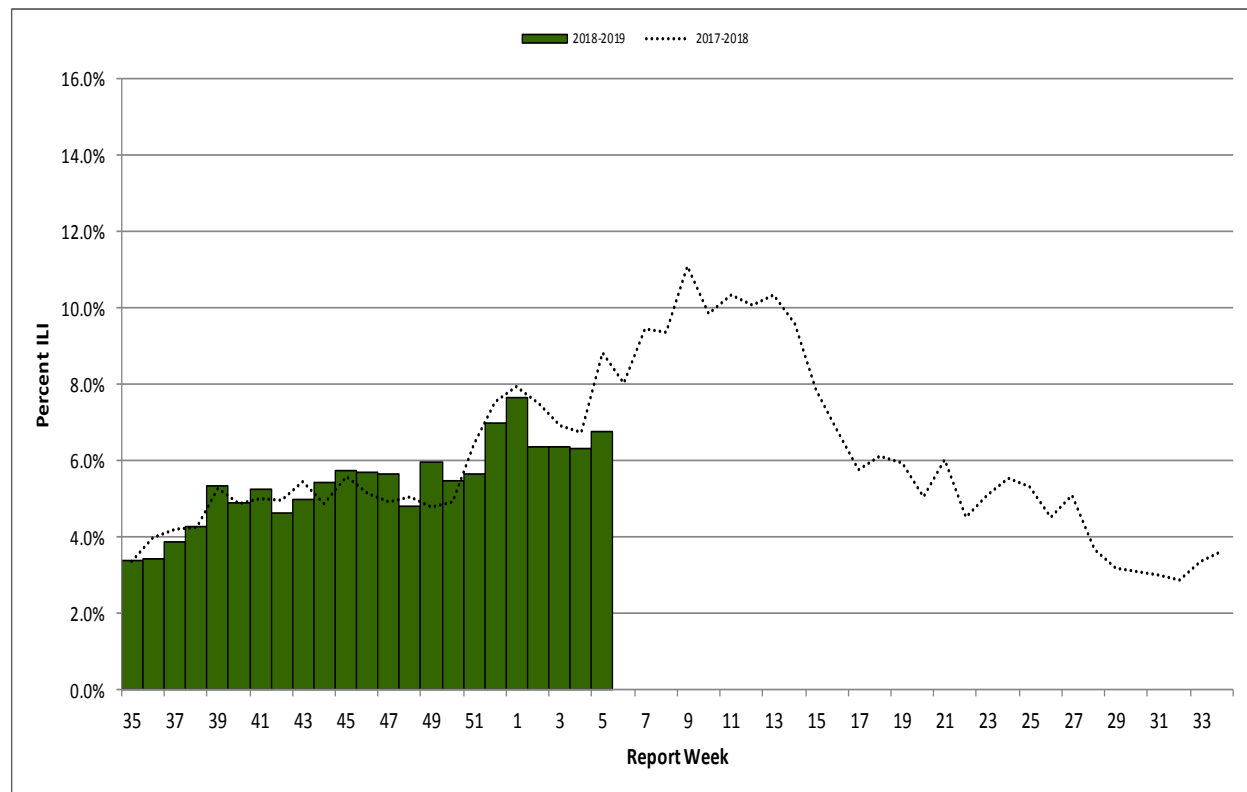


Figure 5: Percent of emergency department visits with ILI by report week, NL, 2018-2019

Source: Emergency room data provided by the four regional health authorities.

Other Respiratory Viruses

Table 3: Weekly and total number of positive respiratory virus specimens in NL, by type, 2018-2019 season

	Week 5	Total
R.S.V.	26	169
Parainfluenza virus 1	0	0
Parainfluenza virus 2	10	26
Parainfluenza virus 3	5	48
Adenovirus	3	20
Entero/Rhinovirus	13	236
hMPV	6	17



Source: Respiratory Virus Detection, Public Health Agency of Canada; Public Health and Microbiology Laboratory, Eastern Health
 *Total from August 26, 2018 to February 2, 2019.

HealthLine

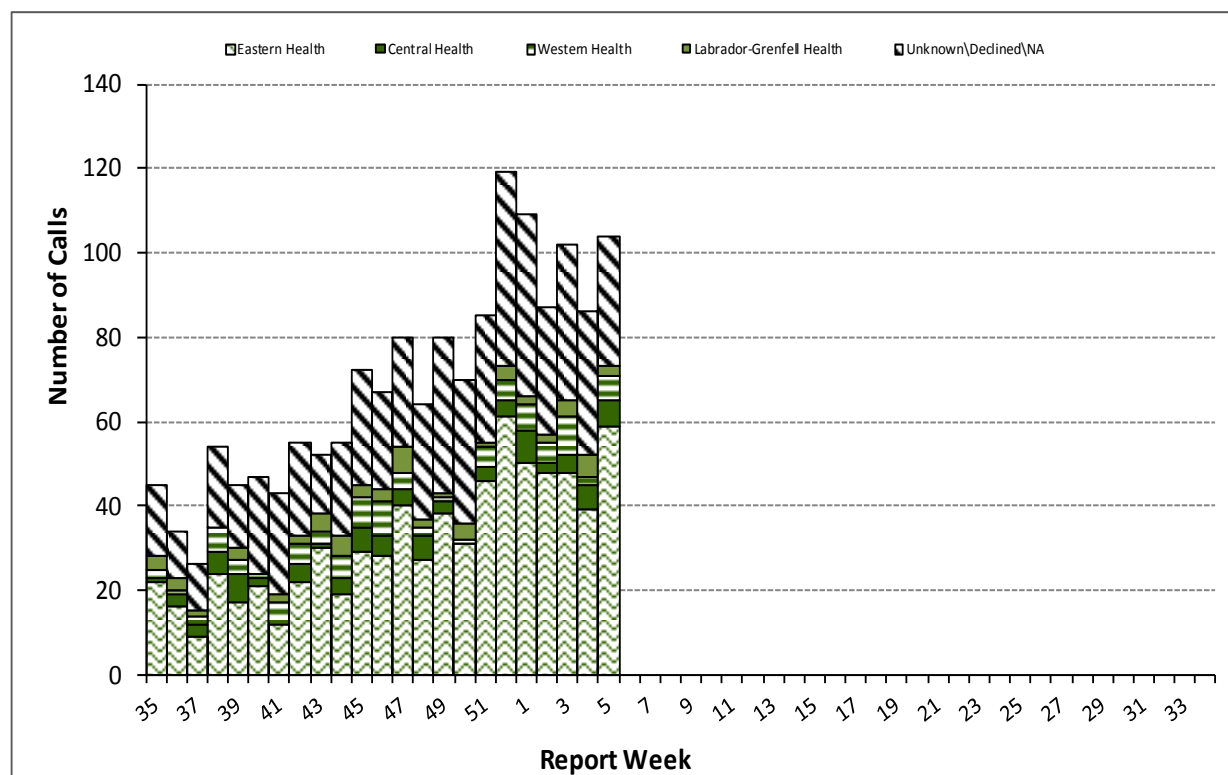


Figure 6: Number of influenza-like-illness HealthLine calls by week and RHA, NL, 2018-2019 season

Resources and Disclaimer

- ⇒ Provincial influenza statistics: <http://www.health.gov.nl.ca/health/publichealth/cdc/informationandsurveillance.html#influenza>
- ⇒ Find a Flu shot clinic in your community: http://www.health.gov.nl.ca/health/publichealth/cdc/infoforpros_edu.html
- ⇒ HealthLine phone number is 811 and website <http://yourhealthline.ca/en/index.html>
- ⇒ Public Health Laboratory website is <http://publichealthlab.ca/>
- ⇒ FluWatch: <http://healthykanadians.gc.ca/diseases-conditions-maladies-affections/disease-maladie/flu-grippe/surveillance/index-eng.php>
- ⇒ Fluctuations in data occur with each report and can be attributed to continuous reporting.