

Week 8, February 17 – February 23, 2019

Department of Health and Community Services
Government of Newfoundland and Labrador



Respiratory Weekly

Highlights

- ⇒ In week 8, there were 32 laboratory-confirmed cases of influenza reported (Table 1).
- ⇒ As of February 23, 2019, there have been 364 (362A, 2B) laboratory-confirmed cases, 75 hospitalizations, 27 ICU admissions and eight deaths.
- ⇒ Across Canada, influenza activity continues to decline slowly, but eastern regions are reporting higher levels of activity compared to western regions. Influenza A (H1N1)pdm09 is the most common influenza virus circulating in Canada.
- ⇒ Cases have been reported in all regional health authorities, with 45% of cases reported in Labrador-Grenfell Health (Figure 2).
- ⇒ Over one-quarter (26%) of cases reported to date were less than 20 years of age (Figure 3).
- ⇒ Eight confirmed influenza outbreaks have been reported so far this season (Figure 4).
- ⇒ Emergency room visits with influenza-like illness (ILI) have decreased from last week (Figure 5).
- ⇒ Other respiratory viruses circulating in week 8 include RSV, PIV, adenovirus, entero/rhinovirus and hMPV (Table 3).
- ⇒ Symptomatic respiratory HealthLine calls have increased from last week (Figure 6).

Laboratory-Confirmed Cases

Table 1: Number of positive influenza cases in NL, by severity, week 8, 2018-2019 season

	Cases	Hospitalizations	ICU Admissions	Deaths
Week	32	7	2	1
Total	364	75	27	8

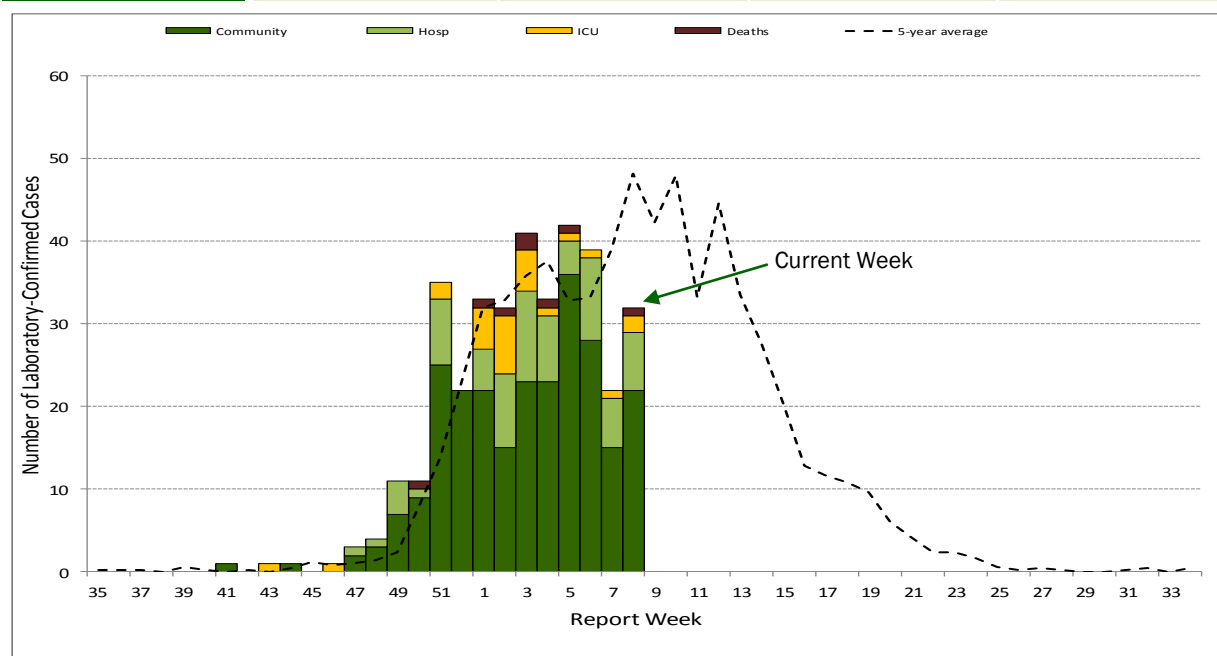


Figure 1: Number of cases, hospitalizations, ICU admissions and deaths, by week virus identified, 2018-2019

Influenza by type, RHA

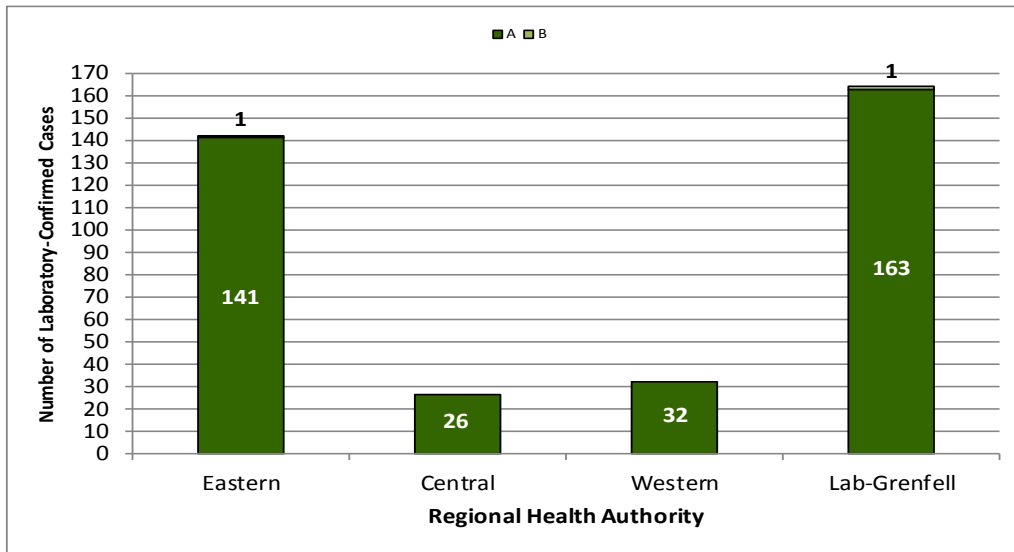


Figure 2: Total number of laboratory-confirmed influenza A and B, by Regional Health Authority, 2018-2019

Influenza by age group (n=364)

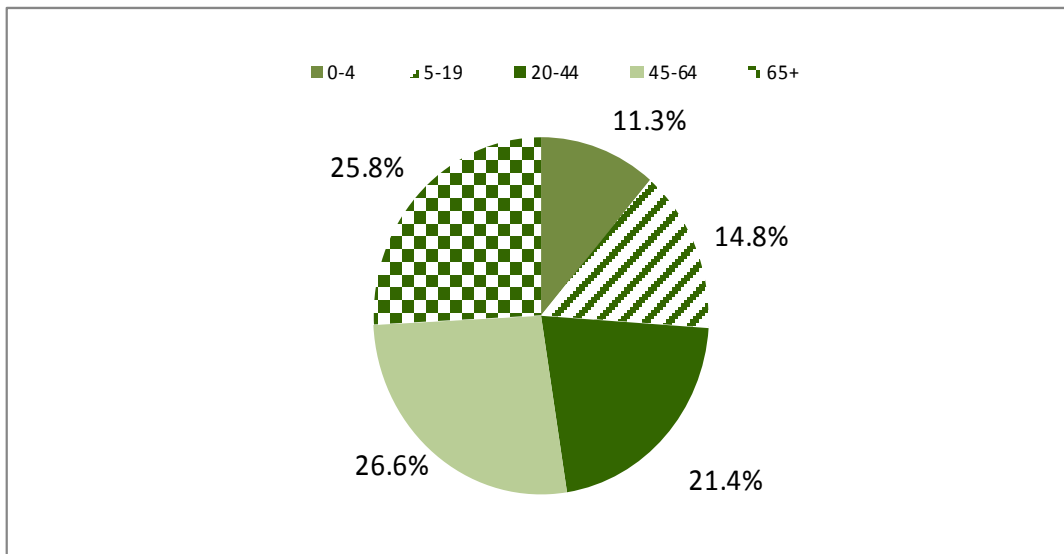


Figure 3: Percent of laboratory-confirmed influenza in NL, by age group, 2018-2019

Antiviral Resistance

Table 2: Cumulative antiviral resistance by influenza virus type and sub-type, Canada, 2018-2019

	Oseltamivir			Zanamivir			Amantadine		
	Tested	Resistant		Tested	Resistant		Tested	Resistant	
	#	#	%	#	#	%	#	#	%
A (H3N2)	76	0	0	76	0	0	51	51	100
A (H1N1)	740	2	0.3	739	0	0	305	305	100
B	26	0	0	26	0	0	--	--	--
Total	842	2	0.2	841	0	0	356	356	100

Source: Influenza and Respiratory Viruses Section, National Microbiology Laboratory (NML), Public Health Agency of Canada

Influenza and Other Respiratory Outbreaks

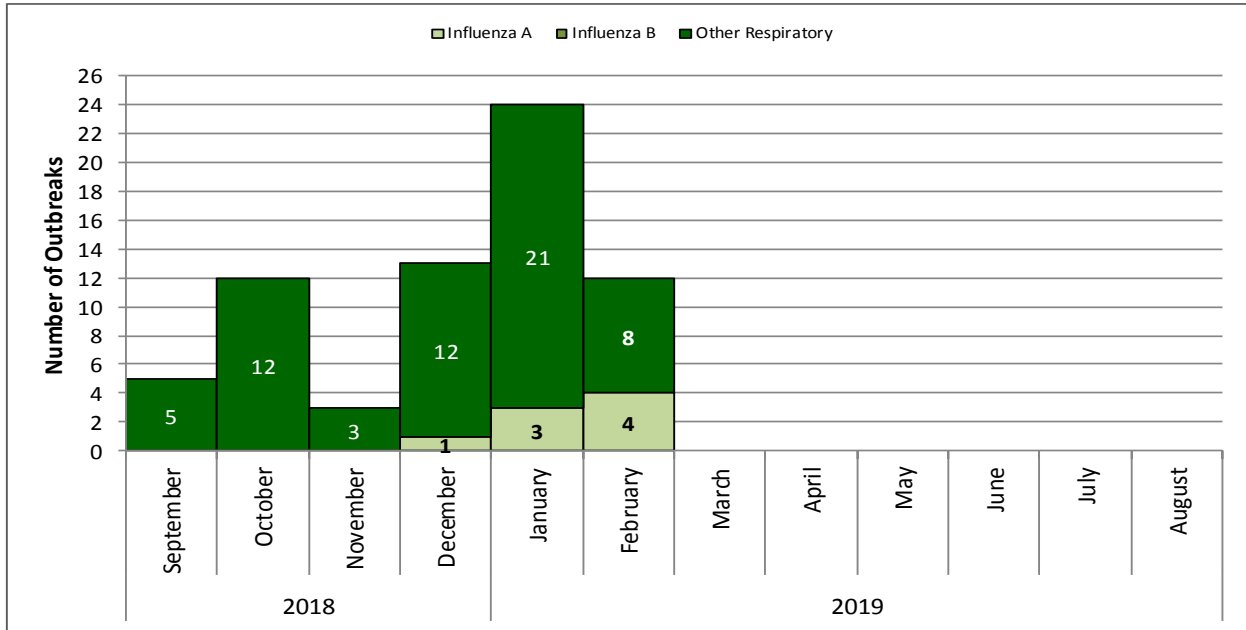


Figure 4: Number of influenza and other respiratory outbreaks, by month of onset, NL, 2018-2019

Emergency Department Influenza-like-illness

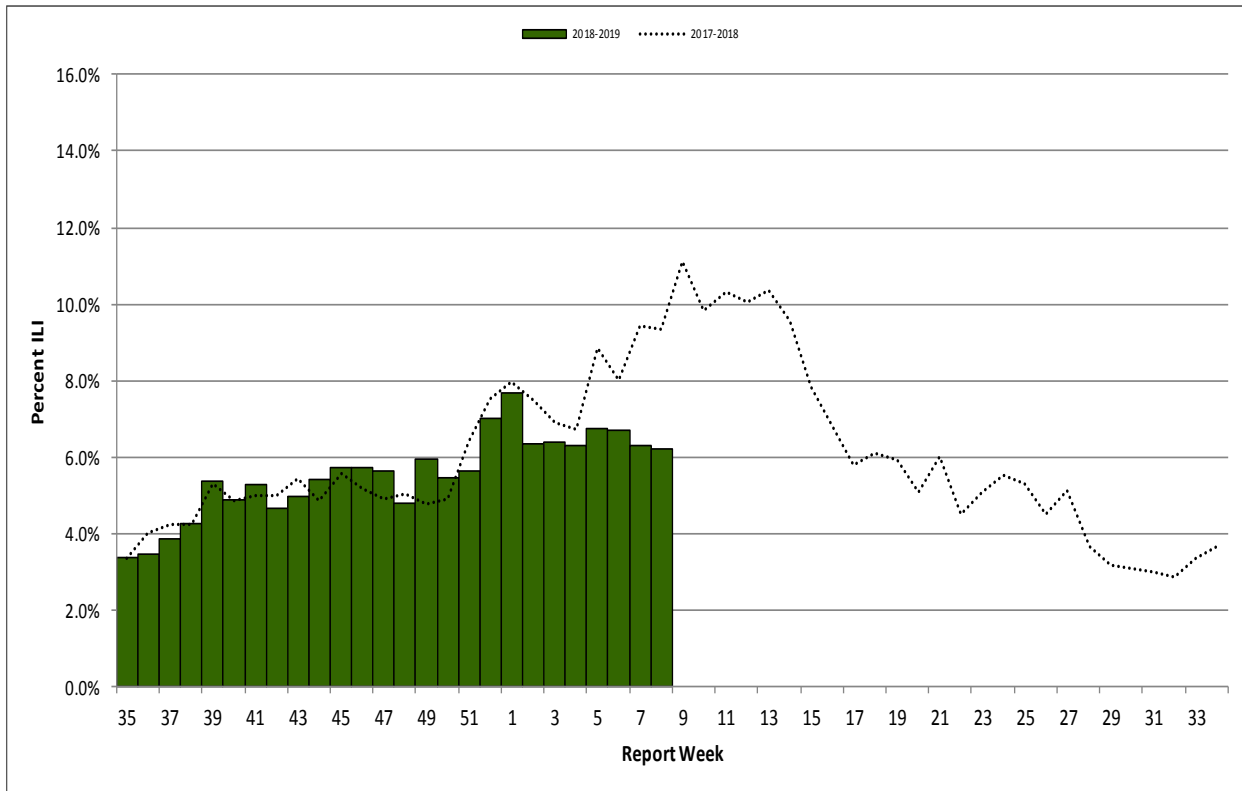


Figure 5: Percent of emergency department visits with ILI by report week, NL, 2018-2019

Source: Emergency room data provided by the four regional health authorities.

Other Respiratory Viruses

Table 3: Weekly and total number of positive respiratory virus specimens in NL, by type, 2018-2019 season

	Week 8	Total
R.S.V.	32	259
Parainfluenza virus 1	0	0
Parainfluenza virus 2	5	40
Parainfluenza virus 3	2	58
Adenovirus	3	24
Entero/Rhinovirus	8	261
hMPV	4	35



Source: Respiratory Virus Detection, Public Health Agency of Canada; Public Health and Microbiology Laboratory, Eastern Health
 *Total from August 26, 2018 to February 23, 2019.

HealthLine

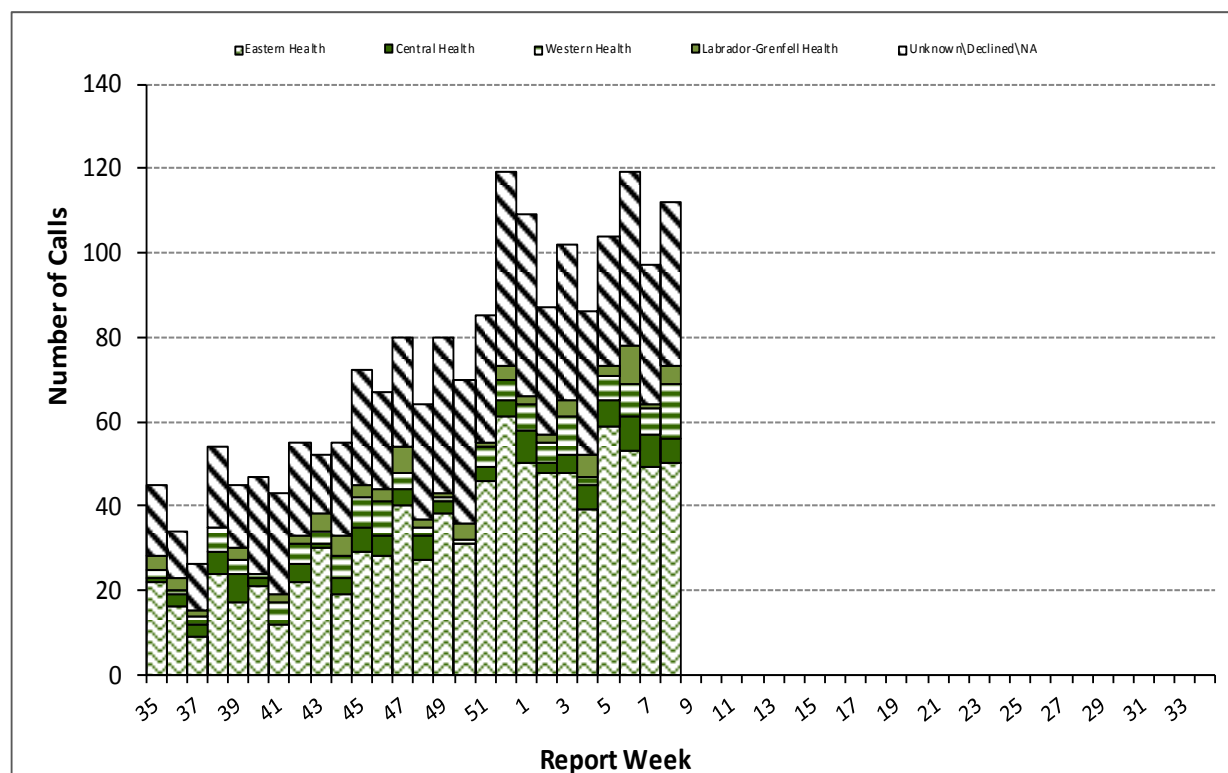


Figure 6: Number of influenza-like-illness HealthLine calls by week and RHA, NL, 2018-2019 season

Resources and Disclaimer

- ⇒ Provincial influenza statistics: <http://www.health.gov.nl.ca/health/publichealth/cdc/informationandsurveillance.html#influenza>
- ⇒ Find a Flu shot clinic in your community: http://www.health.gov.nl.ca/health/publichealth/cdc/infoforpros_edu.html
- ⇒ HealthLine phone number is 811 and website <http://yourhealthline.ca/en/index.html>
- ⇒ Public Health Laboratory website is <http://publichealthlab.ca/>
- ⇒ FluWatch: <http://healthykanadians.gc.ca/diseases-conditions-maladies-affections/disease-maladie/flu-grippe/surveillance/index-eng.php>
- ⇒ Fluctuations in data occur with each report and can be attributed to continuous reporting.