

Week 47, November 18 – November 24, 2018

Department of Health and Community Services
Government of Newfoundland and Labrador

Respiratory Weekly

Highlights

- ⇒ In week 47, there were three laboratory-confirmed cases of influenza reported (Table 1).
- ⇒ As of November 24, 2018, there have been seven (6A, 1B) laboratory-confirmed cases, one hospitalization, and two ICU admissions.
- ⇒ Influenza activity across Canada has started earlier than in recent years and continues to increase. Influenza A (H1N1)pdm09 is the most common subtype detected to date.
- ⇒ Cases have been reported in all regional health authorities (Figure 2).
- ⇒ Approximately 71% (5 of 7) were less than 45 years of age (Figure 3).
- ⇒ No confirmed influenza outbreaks have been reported so far this season (Figure 4).
- ⇒ Emergency room visits with influenza-like illness (ILI) and symptomatic respiratory HealthLine calls have increased in recent weeks (Figures 5 and 6).
- ⇒ Other respiratory viruses circulating in week 47 include PIV, entero/rhinovirus and adenovirus (Table 3).
- ⇒ **Did you get it? Influenza vaccination remains one of the best methods to protect you and your children and prevent the spread of the virus!**

Laboratory-Confirmed Cases

Table 1: Number of positive influenza cases in NL, by severity, week 47, 2018-2019 season

	Cases	Hospitalizations	ICU Admissions	Deaths
Week	3	1	0	0
Total	7	1	2	0

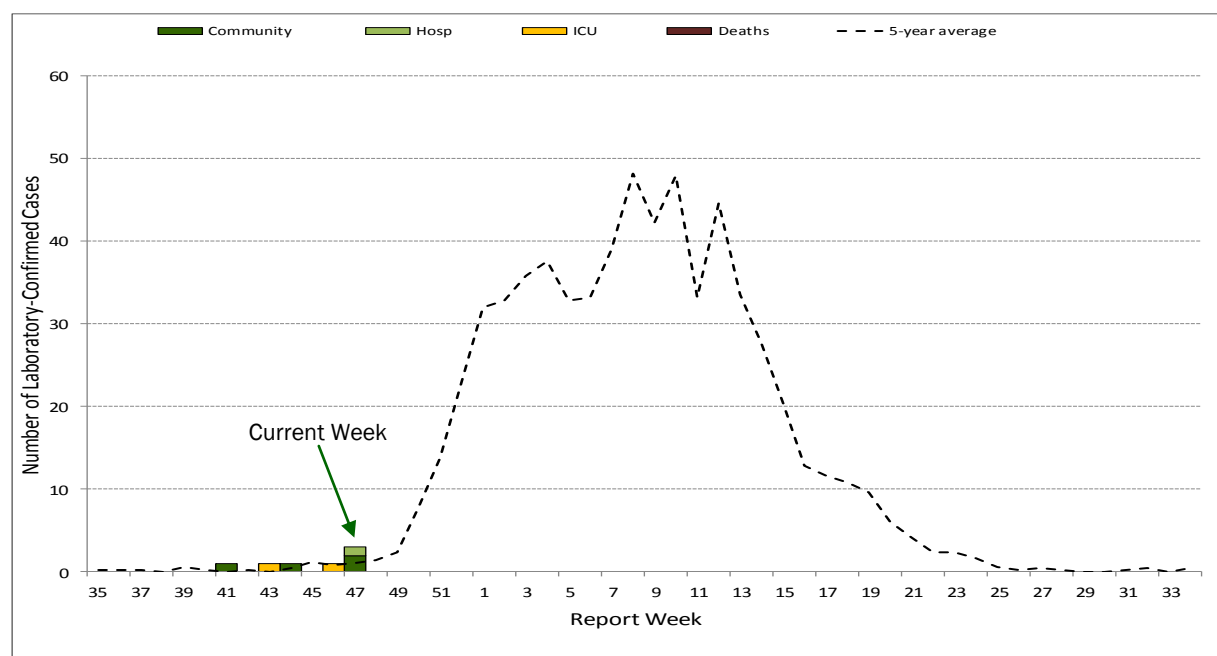


Figure 1: Number of cases, hospitalizations, ICU admissions and deaths, by week virus identified, 2018-2019

Influenza by type, RHA

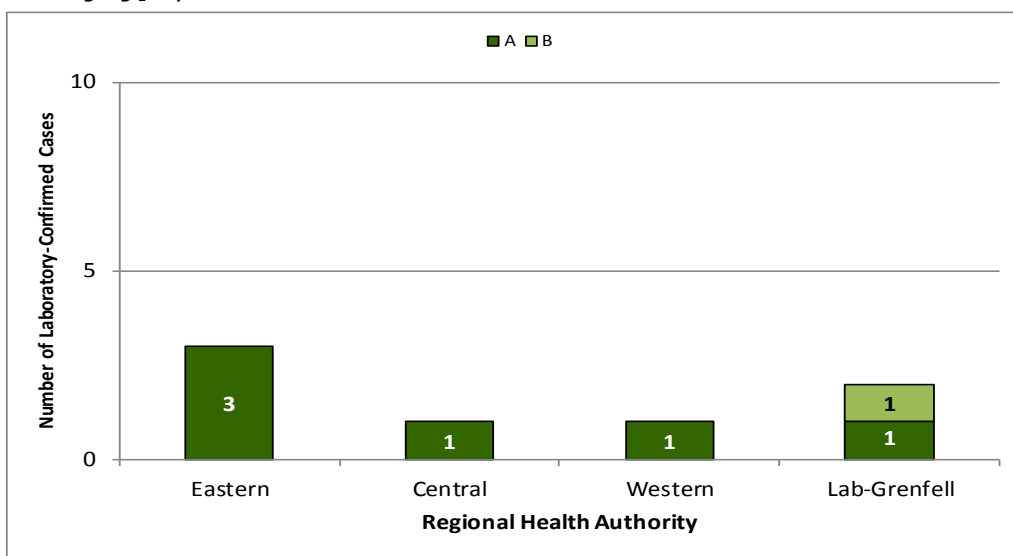


Figure 2: Total number of laboratory-confirmed influenza A and B, by Regional Health Authority, 2018-2019

Influenza by age group (n=7)

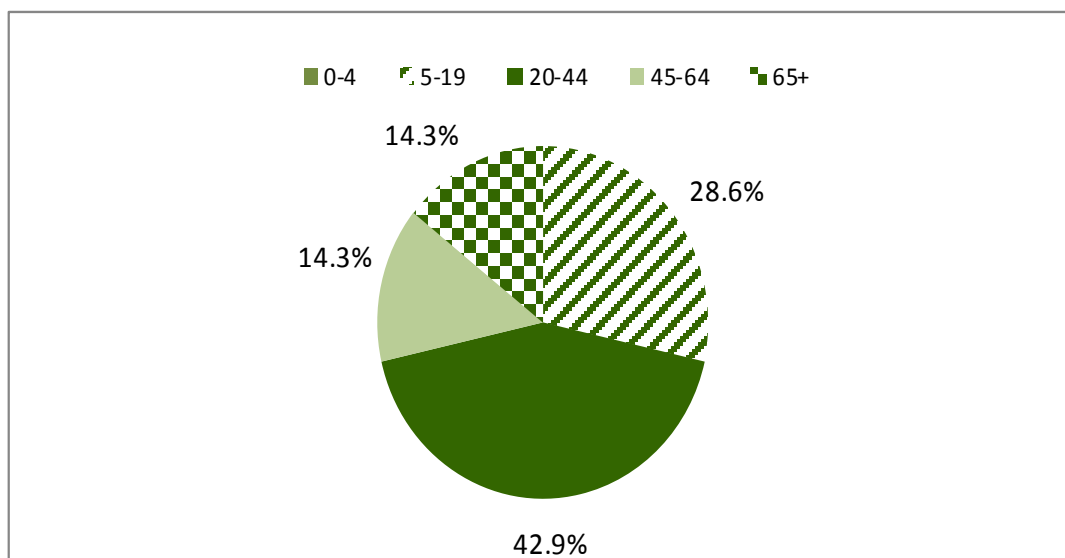


Figure 3: Percent of laboratory-confirmed influenza in NL, by age group, 2018-2019

Antiviral Resistance

Table 2: Cumulative antiviral resistance by influenza virus type and sub-type, Canada, 2018-2019

	Oseltamivir			Zanamivir			Amantadine		
	Tested	Resistant		Tested	Resistant		Tested	Resistant	
	#	#	%	#	#	%	#	#	%
A (H3N2)	16	0	0	16	0	0	18	18	100
A (H1N1)	76	0	0	76	0	0	77	77	100
B	10	0	0	10	0	0	--	--	--
Total	102	0	0	102	0	0	95	95	100

Source: Influenza and Respiratory Viruses Section, National Microbiology Laboratory (NML), Public Health Agency of Canada

Influenza and Other Respiratory Outbreaks

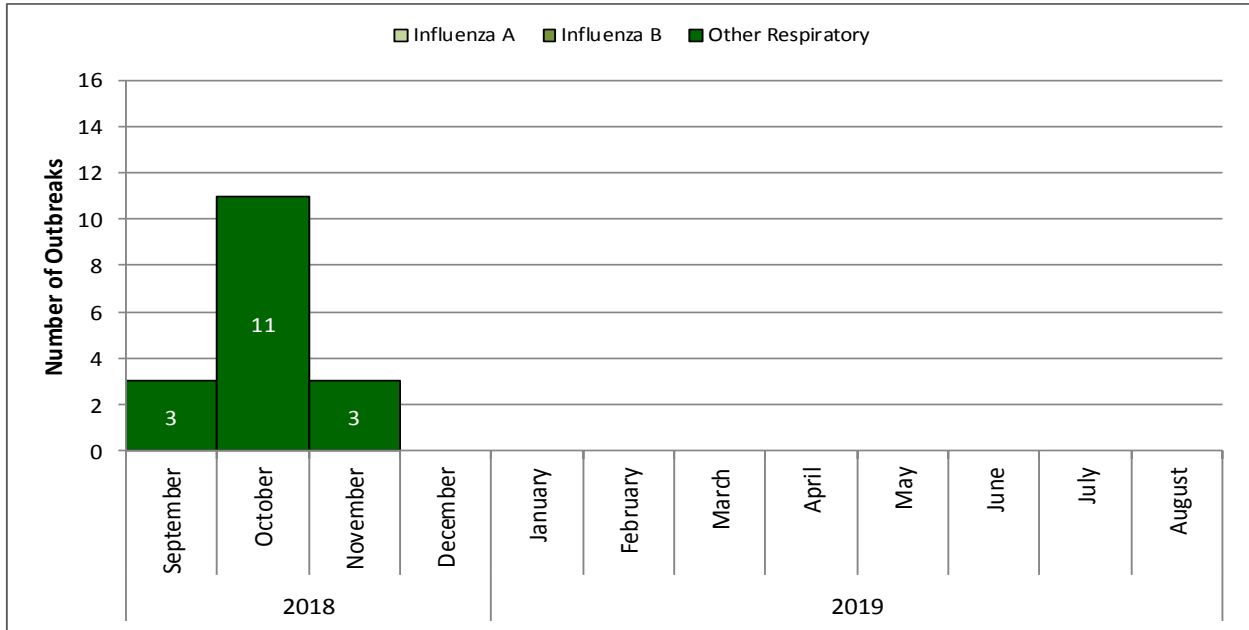


Figure 4: Number of influenza and other respiratory outbreaks, by month of onset, NL, 2018-2019

Emergency Department Influenza-like-illness

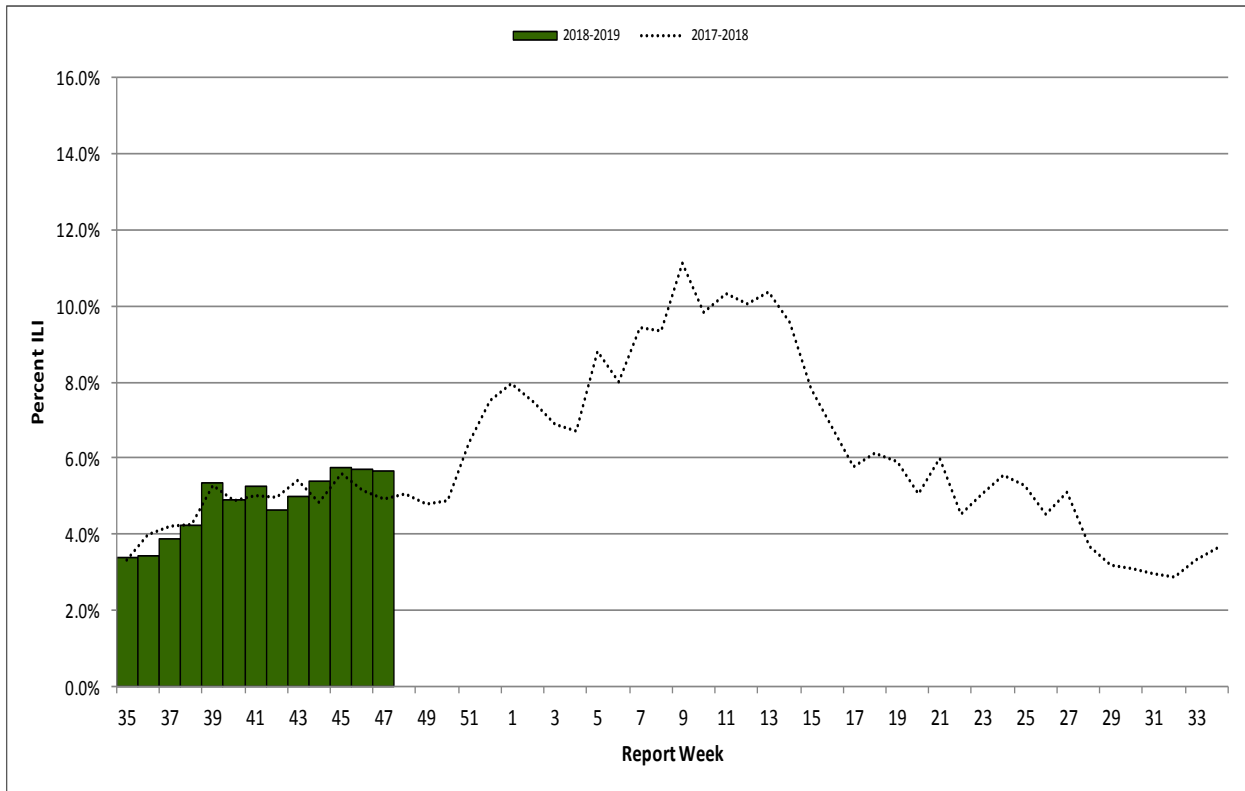


Figure 5: Percent of emergency department visits with ILI by report week, NL, 2018-2019

Source: Emergency room data provided by the four regional health authorities.

Other Respiratory Viruses

Table 3: Weekly and total number of positive respiratory virus specimens in NL, by type, 2018-2019 season

	Week 47	Total
R.S.V.	0	14
Parainfluenza virus 1	0	0
Parainfluenza virus 2	2	3
Parainfluenza virus 3	4	16
Adenovirus	1	9
Entero/Rhinovirus	10	114
hMPV	0	0



Source: Respiratory Virus Detection, Public Health Agency of Canada; Public Health and Microbiology Laboratory, Eastern Health
 *Total from August 26, 2018 to November 24, 2018.

HealthLine

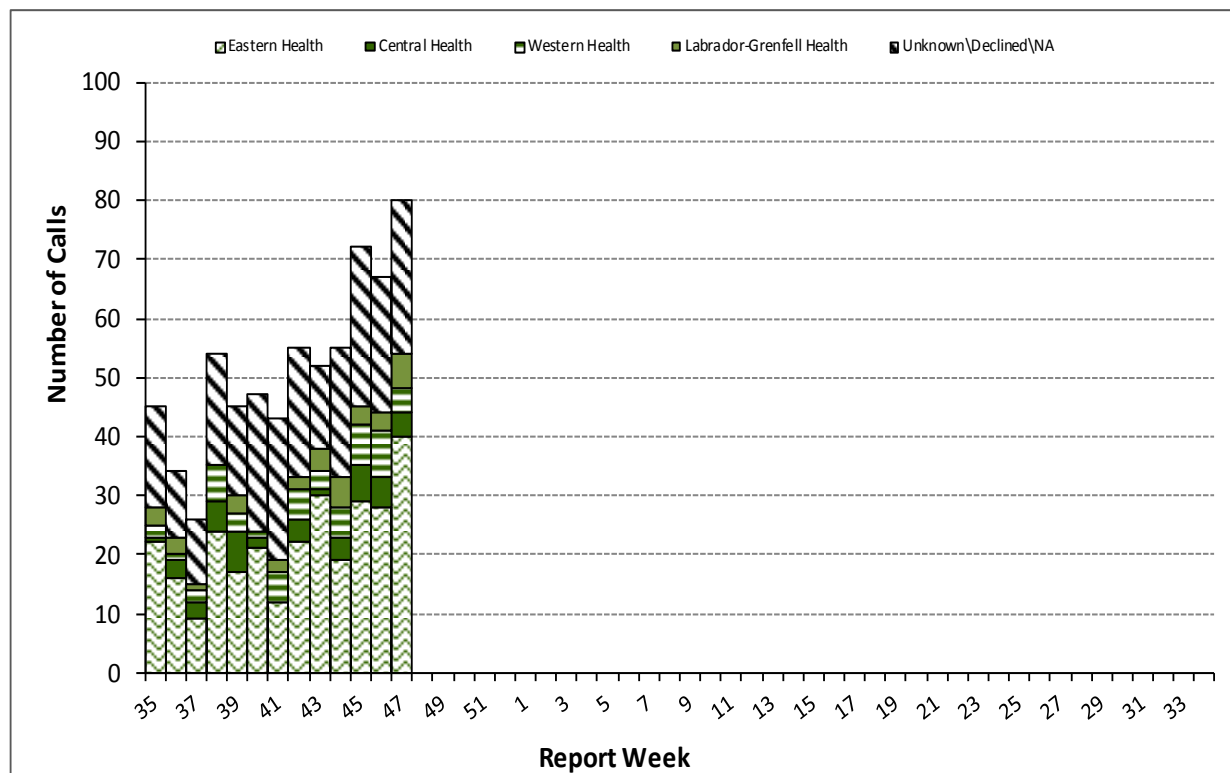


Figure 6: Number of influenza-like-illness HealthLine calls by week and RHA, NL, 2018-2019 season

Resources and Disclaimer

- ⇒ Provincial influenza statistics: <http://www.health.gov.nl.ca/health/publichealth/cdc/informationandsurveillance.html#influenza>
- ⇒ Find a Flu shot clinic in your community: http://www.health.gov.nl.ca/health/publichealth/cdc/infoforpros_edu.html
- ⇒ HealthLine phone number is 811 and website <http://yourhealthline.ca/en/index.html>
- ⇒ Public Health Laboratory website is <http://publichealthlab.ca/>
- ⇒ FluWatch: <http://healthykanadians.gc.ca/diseases-conditions-maladies-affections/disease-maladie/flu-grippe/surveillance/index-eng.php>
- ⇒ Fluctuations in data occur with each report and can be attributed to continuous reporting.